



1501 Industrial Way North, Toms River, NJ 08755
Phone: (732) 349-2109 • Fax: (732) 244-0867

PART #21045

2000-2002 F-Body Performance Air Lid

PACKING LIST

Before installation, use this check list to make sure all necessary parts have been included.

ITEM	QTY	CHECK	PART NUMBER	DESCRIPTION
1.	1	<input type="checkbox"/>	210505800	Performance Air Box Lid
2.	1	<input type="checkbox"/>	48707483	Clamp, Air Box Lid
3.	2	<input type="checkbox"/>	10964	90 Degree Connector
4.	1	<input type="checkbox"/>	210382720	Grommet, Rubber
5.	1	<input type="checkbox"/>	10966	Straight Connector
6.	10"	<input type="checkbox"/>	200438720	Hose, 3/4" ID
7.	16"	<input type="checkbox"/>	305806110	Adhesive-Backed EPDM 3/8" Wide by 1/8" Thick
8.	1	<input type="checkbox"/>	*****	Instructions

NOTE: THE USE OF A HAIR DRYER HEATING THE NECK TO INSTALL THE STOCK MAF IN THE SLP LID NECK WILL MAKE THE INSTALLATION MUCH EASIER. THE LID OUTLET NECK IS MADE TIGHT SO A GOOD SEAL IS MADE OF THE MAF TO THE LID.

WARNING: SLP Recommends allowing the vehicle to cool (not running) for two hours before beginning installation.

WARNING: Too avoid the chance of electrical shock or damage to your vehicle's electrical system, disconnect both the negative and positive batter leads (in that order) at the battery.

INSTALLATIONINSTRUCTIONS – #21045

- 1 Disconnect the negative battery terminal. Disconnect the mass airflow sensor (MAF) and inlet air temperature sensor (IAT) connectors.
- 2 Release the two metal retaining strap latches from the air box lid, remove the two pushpins and air pump hose from the air intake duct resonator, and loosen the worm screw clamp on the throttle body bellow (engine side). Next, remove the entire air box lid, air intake duct resonator, MAF, and air bellow as a one-piece unit. Place on a suitable work surface to remove the stock air box lid and air intake duct resonator from the mass airflow sensor.
- 3 Loosen and remove the worm screw clamp at the air intake duct resonator to mass airflow sensor connection. Separate the stock air box lid and air intake duct resonator as a one-piece unit from the mass airflow sensor. Remove the intake air temperature sensor and rubber grommet from the air intake duct resonator.

- 4 Install the rubber grommet, included in the kit, into the larger hole along the side of SLP's performance air box lid. Insert the 90° connector included in the kit, through the rubber grommet installed through SLP's air box lid.
- 5 Take the supplied 10" of hose and cut it into a 7" and a 3" long piece. Assemble pieces with one of the supplied 90 degree elbows. It should look like the photo below.

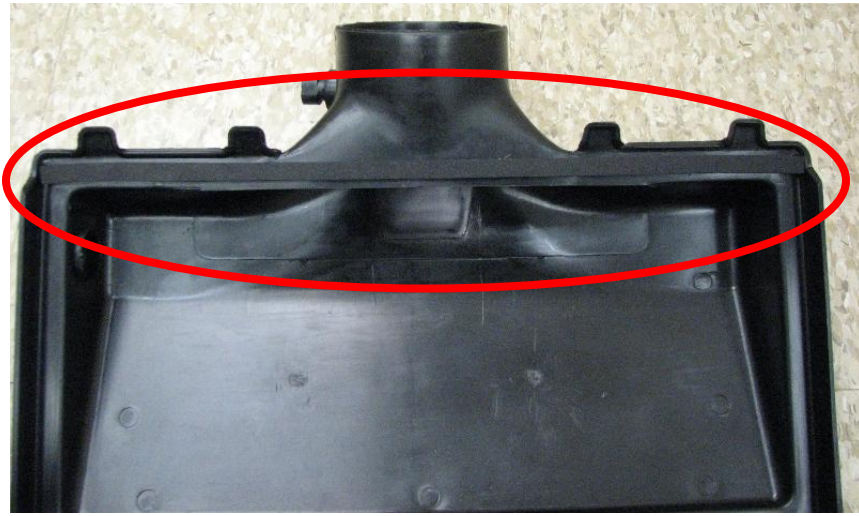


- 6 Attach the long end of the rubber hose to the end of the other 90° elbow. (Reference photo below for orientation of hose with connectors) Install the intake air temperature sensor and rubber grommet from the air intake duct resonator into the 3/4" diameter hole located in the neck of the performance air box lid.



Note: The use of a small amount of lubricant will ease the installation of the rubber grommets to SLP's performance air box lid.

- 7 Install the 16" long rubber strip on the back edge of the airbox. See photo below. This will aid in a complete seal depending on the air filter you choose.



- 8 Place the worm screw clamp from the air intake duct resonator over the neck of SLP's performance air box lid. Do NOT tighten the worm screw clamp yet. Insert the mass airflow sensor into the neck of the performance air box lid. Be sure to correctly align the performance air box lid with the mass airflow sensor to insure a proper fit on the vehicle. Tighten the worm screw clamp.
- 9 Place the performance air box lid, MAF, and air bellow into the vehicle as a one-piece unit. Insert the rear hold-down tabs on the performance air box lid into the preformed slots on the upper radiator support. Attach the two metal retaining strap latches to the air box lid. Install the air bellow to the throttle body and tighten the worm screw clamp. Install the air pump hose to the straight connector on the end of the rubber hose provided protruding from the performance air box lid.

Note: The use of a small amount of lubricant will ease the installation of the air pump hose to the straight connector.
- 10 Connect the mass airflow sensor (MAF) and inlet air temperature sensor (IAT) connectors. Connect the negative battery terminal.