



1501 Industrial Way North, Toms River, NJ 08755
 Phone: (732) 349-2109 • Fax: (732) 244-0867

PART
#30046/30047/30048

Long Tube Headers, High Flow Y-pipe, 98-02 F-Body

PACKING LIST

Before installation, use this check list to make sure all necessary parts have been included.

ITEM	QTY	CHECK	PART NUMBER	DESCRIPTION
1.	1	<input type="checkbox"/>	300300600C	Header, Long Tube, Drivers Side, Coated
2.	1	<input type="checkbox"/>	300300601C	Header, Long Tube, Passengers Side, Coated
3.	1	<input type="checkbox"/>	310500115	Y-pipe, P-Side, F-Body, LT Header Re-Design
4.	1	<input type="checkbox"/>	310500116	Y-pipe, D-Side, F-Body, LT Header Re-Design
5.	1	<input type="checkbox"/>	12553047	EGR Gasket
6.	2	<input type="checkbox"/>	12553617	A.I.R. Gaskets
7.	2	<input type="checkbox"/>	12558573	Head Exhaust Gaskets
8.	8	<input type="checkbox"/>	21000K	Nylon Wire Ties
9.	5	<input type="checkbox"/>	308940020	3" Band Clamps
10.	1	<input type="checkbox"/>	20402290	24" O2 Wire Harness Extension
11.	1	<input type="checkbox"/>	20402280	12" O2 Wire Harness Extension
12.	4	<input type="checkbox"/>	950078801	Washers, Flat, M8
13.	2	<input type="checkbox"/>	301134001	Cats. High Flow, 200 Cells/Inch, 3" Inlet/Outlet
14.	1	<input type="checkbox"/>	020402550	Harness , ABS Extension, 14"
15.	1	<input type="checkbox"/>	*****	Instructions

PACKING LIST-2001-2002 MY Additional Parts P/N 30048

16.	1	<input type="checkbox"/>	307618072	Plate, EGR, Block-off
-----	---	--------------------------	-----------	-----------------------

PACKING LIST-2000 MY Additional Parts P/N 30047

16.	1	<input type="checkbox"/>	12565502	Tube, AIR, LS1, 01-02 F-Body, Passengers Side
17.	1	<input type="checkbox"/>	12565501	Tube, AIR, LS1, 01-02 F-Body, Drivers Side

PACKING LIST-1998-1999 MY Additional Parts P/N 30046

16.	1	<input type="checkbox"/>	12565502	Tube, AIR, LS1, 01-02 F-Body, Passengers Side
17.	1	<input type="checkbox"/>	12565501	Tube, AIR, LS1, 01-02 F-Body, Drivers Side
18.	2	<input type="checkbox"/>	300080500	Hex Head, M8-1.25x20mm
19.	1	<input type="checkbox"/>	310500104	Extension, EGR, 98-99 F-Body
20.	1	<input type="checkbox"/>	12553047	EGR Gasket

WARNING: SLP Recommends allowing the vehicle to cool (not running) for five hours before beginning installation.

INSTALLATION INSTRUCTIONS - #30046/30047/30048

- 1 Begin the install by raising the vehicle, preferably on a vehicle lift, and unscrew all four oxygen sensors. Next using an impact gun and a long extension unscrew all three exhaust manifold stud nuts on each side. Move to the rear of the transmission and unbolt the transmission to y-pipe bracket from the factory y-pipe. Also unbolt the clamp connecting the factory y-pipe to the cat-back intermediate pipe. Pull the factory y-pipe forward and remove it from the vehicle.
- 2 Remove the ignition wires and spark plugs from cylinder 7 and 8 while underneath the vehicle.
- 3 Move to the top of the engine compartment and remove the remaining ignition wires and spark plugs from the cylinder heads. Unbolt the EGR tube (98-00 only) from the passenger's side manifold using a long extension, and then unbolt the AIR tubes from both manifolds. Unbolt and remove the stock manifolds from the bottom of the vehicle taking care to not damage any wire harnesses in the vicinity. Note the use of extensions and universal joints will ease the removal procedure greatly.
- 4 Before installing the SLP headers the oxygen sensors extensions must be installed. Use the long extension for the driver's side and the short extension on the passenger's side. On the driver's side route the harness underneath the factory heat shield. Once the extensions are installed move to the passenger's side and locate the ABS/starter wire harness that is pinned to the chassis. Remove and discard the clip from the chassis. Unplug the abs harness and route the oxygen sensor harness and abs harness through the motor mount bracket. Install the abs harness extension and then using two tie wraps, tie the abs harness and starter harness together while moving the harness's as forward as possible, see photo 1 below.

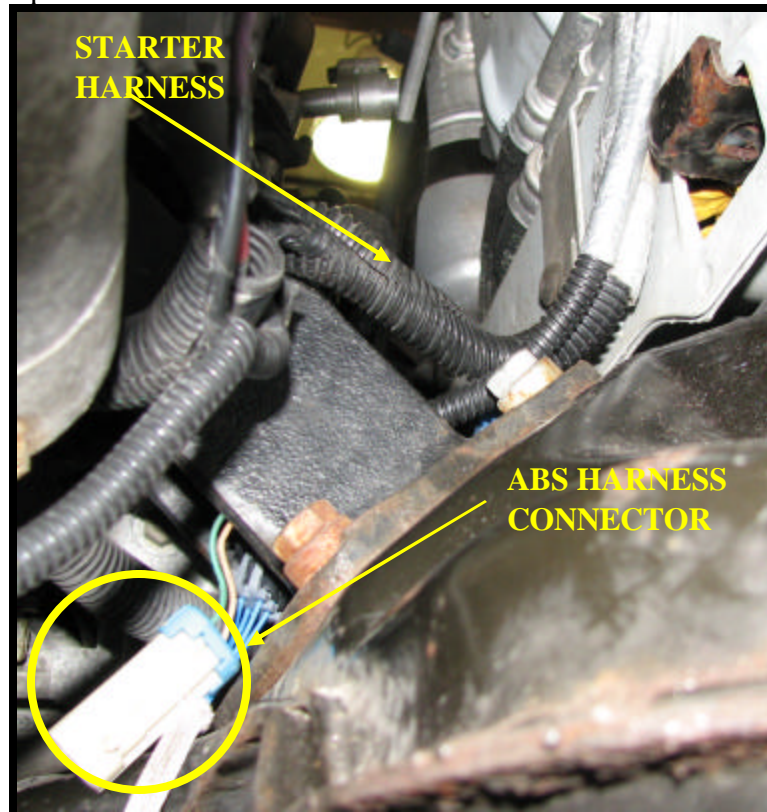


Photo 1: ABS, Starter and Oxygen Sensor Harness Routing

- 5 With the help of a partner slide the driver's side header into place from the bottom of the vehicle and insert a gasket between the flange and the cylinder head. Insert the front and rearmost bolts to hold the header and gasket in place and then insert the remaining bolts to secure the header. Torque the bolts in two stages, first to 13 ft-lbs and then to 18 ft-lbs.
- 6 With the help of a partner slide the passenger's side header into place from the bottom of the vehicle and insert a gasket between the flange and the cylinder head. Insert the front and rearmost bolts to hold the header and gasket in place and then insert the remaining bolts to secure the header. Torque the bolts in two stages, first to 13ft-lbs and then to 18 ft-lbs. Note if installing these headers on a 01-02 car bolt the EGR block off plate to the header before installing it in the vehicle. See Photo 2 on the below.



Photo 2: Installation of the Passengers Side Header

- 7 For 98-99 place the two EGR bolts through the holes in the EGR extension tube and then place a gasket on the bolts. Bolt the EGR extension tube to the flange on the SLP headers first by starting the bolts by hand and then using a long extension to fully tighten the bolts. Then bolt the factory EGR tube to the SLP extension with the factory bolts and the supplied gasket. For 00 the factory EGR tube is bolted directly to the SLP header. For 98-00 remove the factory AIR tubes and replace them with the supplied SLP AIR tubes. Install the AIR tubes with the supplied gaskets to the SLP headers and fully tighten the bolts.
- 8 Move to the undercarriage of the car and flip the transmission bracket 180 degrees. Install the SLP high flow cats onto the headers with the supplied clamps. Next slide the y-pipe onto the passenger's side converter with the supplied clamps. Slide the driver's side pipe onto the driver's side converter and then rotate the pipes together to connect the y-pipe to the driver's side pipe. Re-install the cat-back intermediate pipe into the SLP y-pipe with the supplied clamp. Note unbolting the passenger's side hanger will allow the cat-back to have enough movement to easily join the two pipes. See photo 3 on the next page.



Photo 3: SLP Y-pipe Installed

- 9 Install the oxygen sensors into the SLP headers and y-pipe and bolt the transmission bracket to the SLP y-pipe using the supplied hardware. See Photo 4 below.

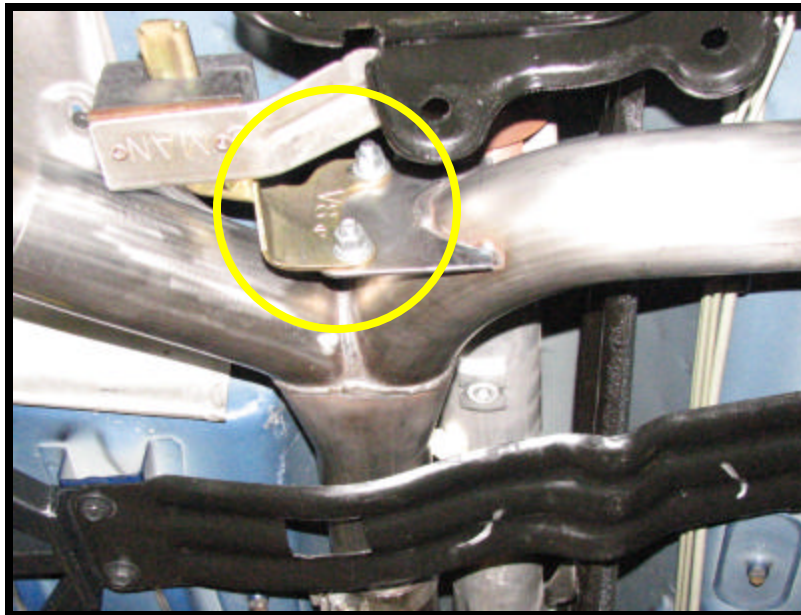


Photo 4: Transmission Mounting Bracket

- 10 Adjust the system from front to rear making sure all exhaust components are free and clear of contact to any wiring or body parts.
- 11 The installation is now complete! ENJOY!