

Powerflo Cat-Back, 98-02 F-Body and LM/LM2 to Powerflo Conversion Kit

PACKING LIST

Before installation, use this check list to make sure all necessary parts have been included.

ITEM	QTY	CHECK	PART NUMBER	DESCRIPTION
1.	1	<input type="checkbox"/>	310301304	Intermediate Pipe, Front Section
2.	1	<input type="checkbox"/>	310301305	Intermediate Pipe, Rear Section
3.	1	<input type="checkbox"/>	310301306	Muffler, Bullet, F-Body Modular, 1998-2002
4.	1	<input type="checkbox"/>	310301310	Y-Pipe Assy, 98-02, LS1 Powerflo Exhaust
5.	1	<input type="checkbox"/>	310301311	Tailpipe, D-Side, 98-02 F-Car Loud Exh
6.	1	<input type="checkbox"/>	310301312***	Muffler, Assembly, D-side, Rear, F-Body, Powerflo,
7.	2	<input type="checkbox"/>	310301313***	Muffler, Assembly, P-side, Rear, F-Body, Powerflo,
8.	1	<input type="checkbox"/>	31039K	Clamp Kit, LS1 Loud Exh 98-02
9.	2	<input type="checkbox"/>	20032A***	Bolt, Allen Cap, Hanger, Rear Frame, F-Body
10.	1	<input type="checkbox"/>	307619100***	Plate, Threaded, Rear Frame, F-Body
11.	1	<input type="checkbox"/>	310301490***	Hanger, Frame, D-Side, F-Body
12.	1	<input type="checkbox"/>	310301491***	Isolator, Rubber, F-Body
13.	4	<input type="checkbox"/>	308144380	Clamp, Torca, 2.5"
14	1	<input type="checkbox"/>	*****	Instructions
AND				
15A.	2	<input type="checkbox"/>	310305080	Tip, 4" OD, 9.5"L, 2.5" Inlet, Torca and Logo
OR				
15B.	1	<input type="checkbox"/>	310305100HP	Tip, T/P Hand Pol., Dual 2 1/2 D-Side Slash Cut
15B.	1	<input type="checkbox"/>	310305107HP	Tip, T/P Hand Pol., Dual 2 1/2 P-Side Slash Cut
OR				
15C.	2	<input type="checkbox"/>	310305302HP	Exhaust Tip, 3 1/2" Polished Tip

WARNING: SLP Recommends allowing the vehicle to cool (not running) for five hours before beginning installation.

NOTE: If you have purchased the SLP Powerflo conversion kit see page 5 for supplemental instructions.

*** SLP PN 31086 Conversion Kit Parts

INSTALLATION INSTRUCTIONS - #31083, 31084, 31085 and 31086

1. Raise the vehicle to allow for a sufficient work area underneath the vehicle. A vehicle lift will make this installation much easier; however, raising the vehicle can be accomplished using ramps or a jack with jack stands.

2. Remove the entire exhaust system, from the Y-pipe outlet back, by first loosening the band clamp at the inlet end of the intermediate pipe. Unbolt the over-axle pipe hanger from the bracket and remove the stock system. To ease removal of the stock system, the intermediate pipe can be cut at the joint where it meets the muffler. If this is not done, the Panhard bar, stiffening brace and passengers side shock absorber must be removed to allow for sufficient clearance for the system to be removed.
3. Place the 2-3/4" band clamp onto the notched inlet end of the SLP intermediate pipe and install the pipe onto the outlet of the stock Y-pipe. Next, place the 3" exhaust clamp over the inlet of the SLP Loudmouth II Muffler and then slip another 3" Exhaust Clamp over the outlet and install the intermediate pipe rear section that will connect to the over axle pipe. Slide the over-axle pipe over the axle housing and connect it to the rear intermediate pipe. Loosely bolt the over-axle pipe hanger to the chassis. See Photo 1 below.

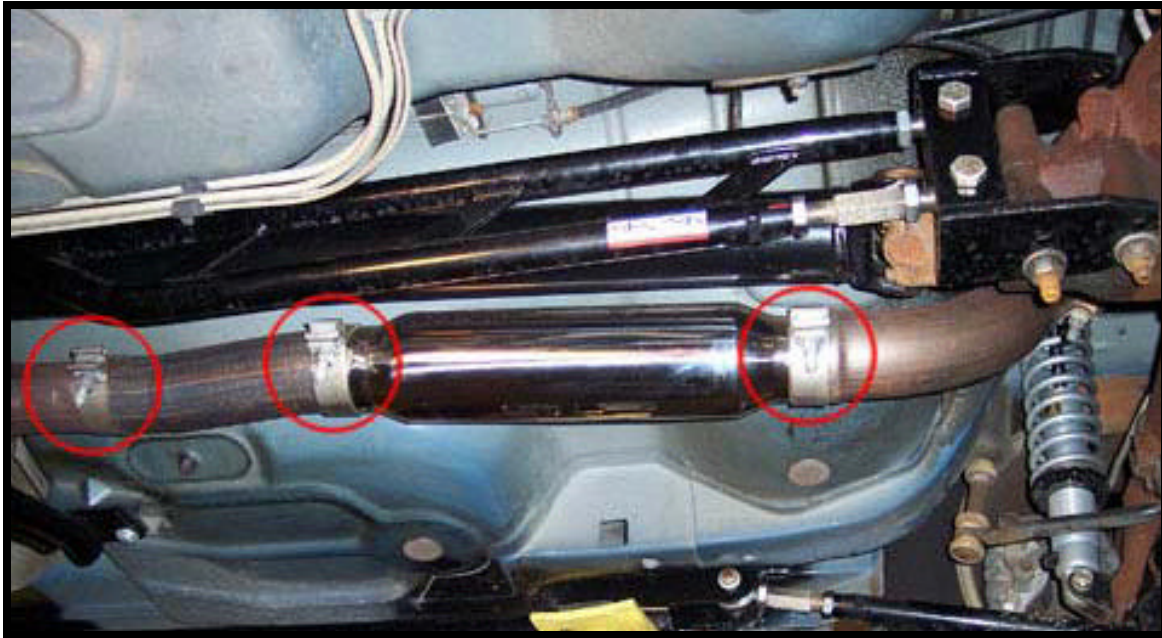


Photo 1: SLP Intermediate Pipe Muffler and Over-Axle Pipe Installed

4. Insert the threaded plate into the frame and using the two Allen screws bolt the frame hanger onto the chassis of the vehicle and slide a rubber isolator onto the frame hanger. Next insert the drivers side tail pipe hanger into the rubber isolator on the chassis and then using a 2 1/2" Uni-Bolt clamp connect the drivers side tail pipe to the over-axle pipe. Next slide the Powerflo muffler hanger onto the rubber isolator on the frame hanger. Using a 2 1/2" Torca clamp install the inlet of the Powerflo muffler onto the driver's side tailpipe. See Photo 2 on the next page.

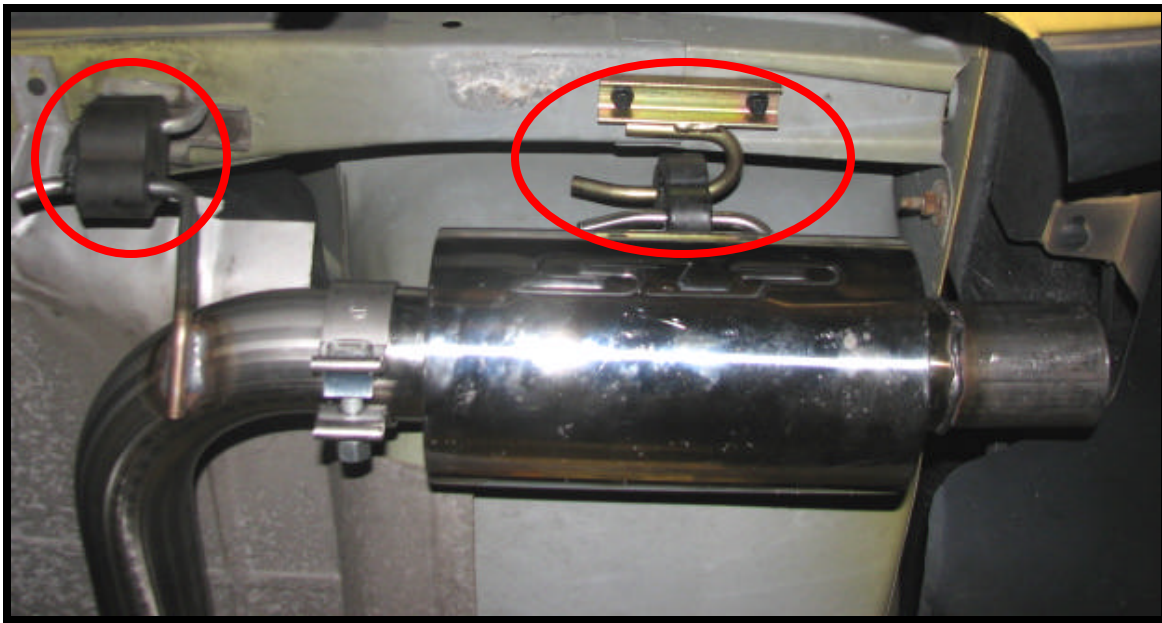


Photo 2: Driver's Side Powerflo Muffler Installed

5. Install the passenger's side muffler onto the over-axle pipe using a 2 ½" Torca clamp. Then install the tips using 2 ½" Torca clamps. See Photo 3 below.

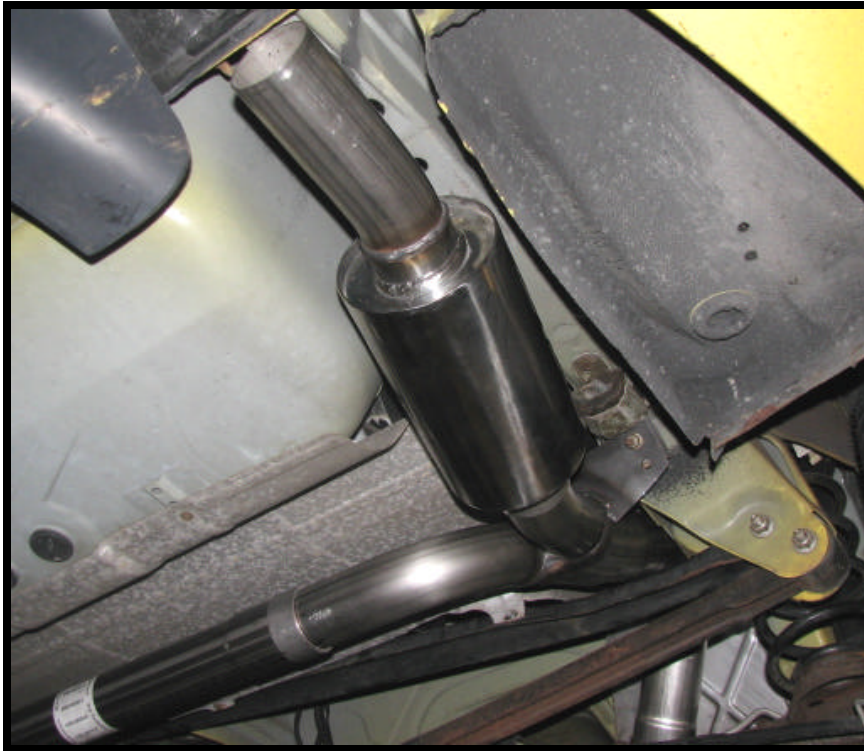


Photo 3: Passengers Side Muffler Installed

6. Adjust the system from front to rear making sure all exhaust components are free and clear of contact to any wiring or body parts.

Note:

Before tightening any of the clamps or hanger bracket, check the fit of the system. Look for clearance around the drive shaft and the 3-inch section of the Y-pipe/Tailpipe assembly. Also, check to make sure that the driver-side tailpipe is running parallel to the heat shielding below the fuel tank and on Firebirds, check to be sure that the tips are centered in the fascia openings. See Photo 4 below.



Photo 4: SLP PN 31084 System

7. The installation is now complete! ENJOY!

SUPPLEMENTAL INSTRUCTIONS FOR **POWERFLO CONVERSION KIT**

This kit is designed for owners of 98-02 F-Bodys who purchased SLP part number 31042, 31042A, 31043, or 31043A. The installation of this kit requires cutting of the y-pipe and drivers side tailpipe therefore safety glasses should be worn at all times.

- 1A. Measure back from the driver's side tailpipe 13 inches (with tip removed) and mark the measurement with a permanent marker. Note that this cut can be made with the pipe on the car or on a suitable work bench. Next move to the passenger's side and measure 9 3/16" from the end of the pipe with the tip removed and mark the measurement with a permanent marker. SLP recommends leaving the y-pipe on the car and making the cut with it bolted in place. Using a suitable saw cut the pipes off at the previously marked locations and discard the cutoffs.
- 2A. Follow Step 4 to Step 7 to complete the install.