



# Blackwing Cold Air Kit

*2010 + Camaro LS3, L99, SLP Supercharged*

*PN: 620047, 620048, 620049, 620050*



## Installation Instructions

Before installing your SLP products, read through the entire installation procedure and check to make sure all items are present. Contact SLP Customer Service at 855-SLP-PERF, week days 9:00 AM to 5:00 PM EST, with any questions regarding fit, missing parts or instructions that are unclear to you.



**Packaging List – Camaro V-8 Cold Air Kit using OEM Intake Tube or SLP Supercharger (620047, 620048)**

| ITEM | QTY | CHECK                    | PART NUMBER      | DESCRIPTION            |
|------|-----|--------------------------|------------------|------------------------|
| 1.   | 1   | <input type="checkbox"/> | 2110-9A600-AA    | Airbox Assembly        |
| 2.   | 1   | <input type="checkbox"/> | 2110V8-12B579-AA | Mass Air Flow Tube     |
| 3.   | 1   | <input type="checkbox"/> | 997-480-BLU      | Blue Filter w/ Clamp   |
|      |     |                          | OR               |                        |
|      | 1   | <input type="checkbox"/> | 997-480-BLK      | Black Filter w/ Clamp  |
| 4.   | 2   | <input type="checkbox"/> | W500224-S437     | Bolt, M8 x 1.25 x 25mm |
| 5.   | 2   | <input type="checkbox"/> | W520823-S439     | J-Clip, M8 x 1.25      |
| 6.   | 1   | <input type="checkbox"/> | 2110-9A612NVH-AA | Foam, 60mm x 40mm      |
| 7.   | 1   | <input type="checkbox"/> | 2110-9600IM-AA   | Installation Manual    |

**Packaging List – Camaro V-8 Cold Air Kit, Blackwing Intake Tube (620049, 620050)**

| ITEM | QTY | CHECK                    | PART NUMBER      | DESCRIPTION            |
|------|-----|--------------------------|------------------|------------------------|
| 1.   | 1   | <input type="checkbox"/> | 2110-9A600-AA    | Airbox Assembly        |
| 2.   | 1   | <input type="checkbox"/> | 2110V8-12B579-AA | Mass Air Flow Tube     |
| 3.   | 1   | <input type="checkbox"/> | 997-480-BLU      | Blue Filter w/ Clamp   |
|      |     |                          | OR               |                        |
|      | 1   | <input type="checkbox"/> | 997-480-BLK      | Black Filter w/ Clamp  |
| 4.   | 2   | <input type="checkbox"/> | W500224-S437     | Bolt, M8 x 1.25 x 25mm |
| 5.   | 2   | <input type="checkbox"/> | W520823-S439     | J-Clip, M8 x 1.25      |
| 6.   | 1   | <input type="checkbox"/> | 2110-9A612NVH-AA | Foam, 60mm x 40mm      |
| 7.   | 1   | <input type="checkbox"/> | 200015858        | Intake Tube, V8        |
| 8.   | 1   | <input type="checkbox"/> | 100064760        | Bellow Hump            |
| 9.   | 1   | <input type="checkbox"/> | 25180042         | Gasket adapter         |
| 10.  | 3   | <input type="checkbox"/> | 48707483         | Clamp                  |
| 11.  | 20" | <input type="checkbox"/> | 2104390000IN     | Hose                   |
| 12.  | 1   | <input type="checkbox"/> | 2110-9600IM-AA   | Installation Manual    |



## **LIMIT OF LIABILITY STATEMENT**

The information contained in this publication was accurate and in effect at the time the publication was approved for printing and is subject to change without notice or liability. Street Legal Performance (SLP) reserves the right to revise the information presented herein or to discontinue the production of parts described at any time.

## **SAFETY REQUIREMENTS**

**STOP! READ IMPORTANT SAFETY CAUTIONS AND WARNINGS BEFORE PROCEEDING.**

### **IMPORTANT SAFETY NOTICE**

Appropriate disassembly, assembly methods and procedures are essential to ensure the personal safety of the individual performing the kit installation. Improper installation due to the failure to correctly follow these instructions could cause personal injury or death. Read each step of the installation manual carefully before starting the actual installation.

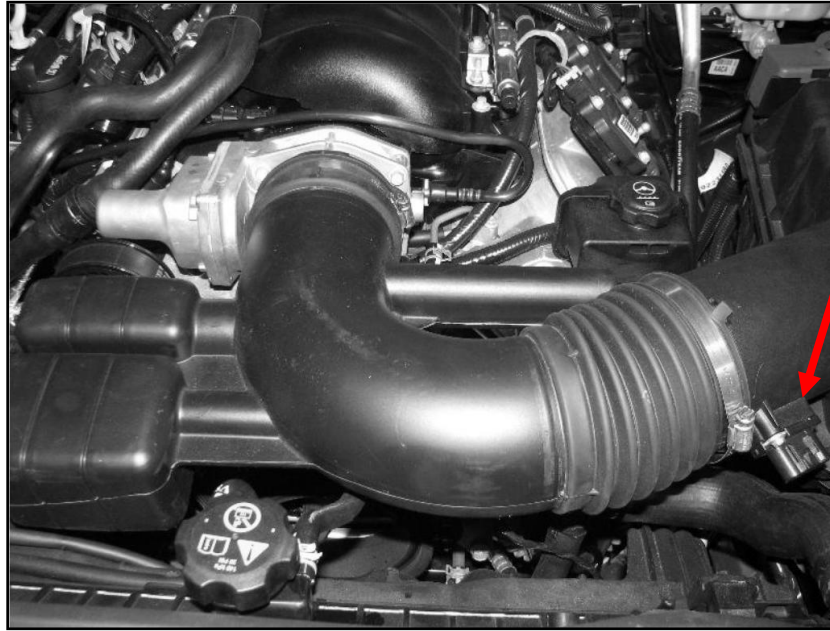
1. Always wear safety glasses for eye protection.
2. Place ignition switch in the OFF position.
3. Always apply the parking brake when working on a vehicle.
4. Chock the front and rear tires to prevent unexpected vehicle movement.
5. If working without a lift, always consult vehicle manual for correct lifting specifications.
6. Operate the engine only in well-ventilated areas to avoid exposure to carbon monoxide.
7. Do not smoke or use flammable items near or around the fuel system.
8. Use chemicals and cleaners in well-ventilated areas.
9. Batteries produce explosive gases, which can cause personal injury. Therefore, do not allow flames, sparks or flammable substances to come near the battery.
10. Keeps hands and any other objects away from the radiator fan blades.
11. Keep yourself and your clothing away from moving parts when the engine is running.
12. Do not wear loose clothing or jewelry that can get caught in rotating parts or scratch surface finishes.
13. Allow the engine, cooling system, brakes and exhaust to cool before working on a vehicle.



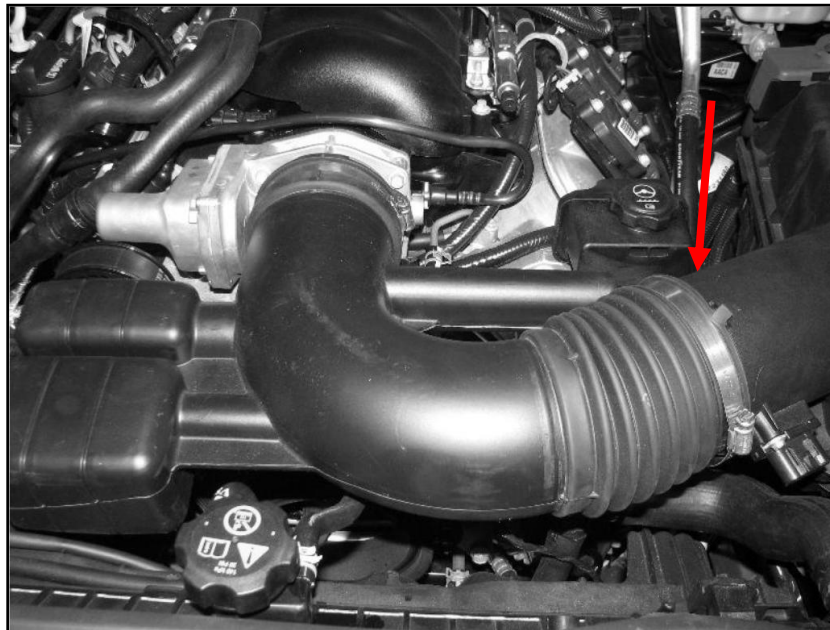
## **Installation Instructions**

### **Section A – Removal** \*Images for supercharger equipped vehicles will not match all pictures.

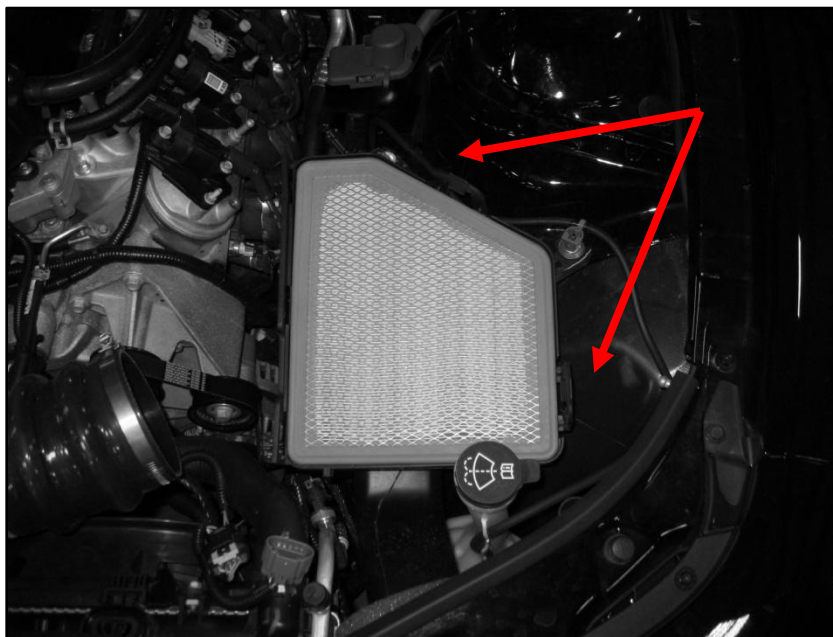
1. Disconnect the wiring harness from the mass air flow sensor.



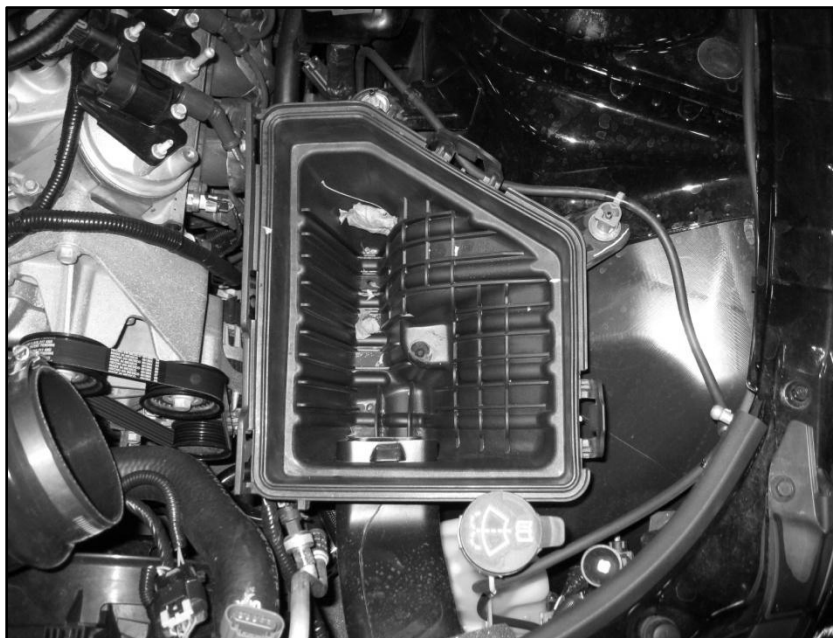
2. Loosen the hose clamp holding the airbox lid to the intake tube.



3. Open and remove the airbox lid by pushing on the two tabs.



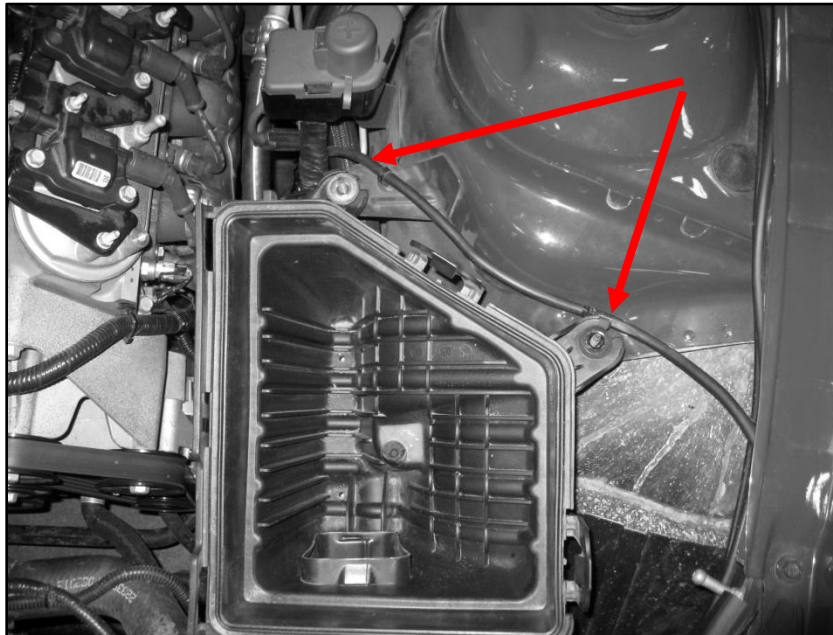
4. Remove the filter.



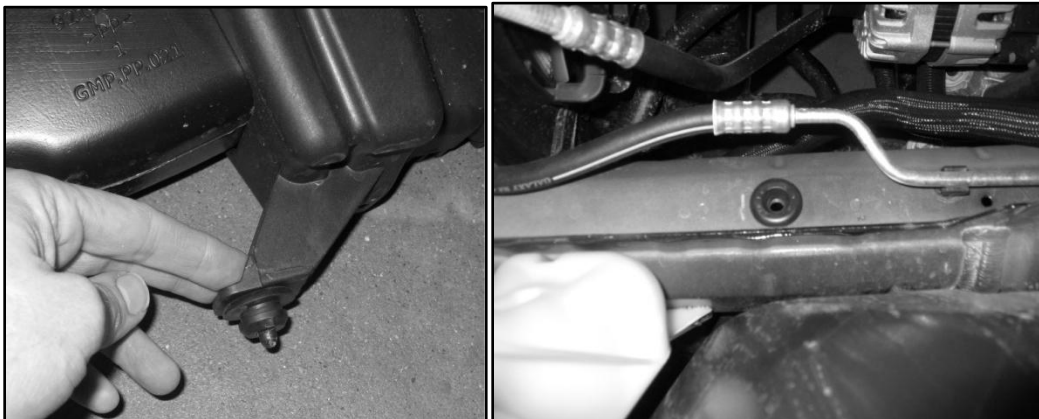




5. Remove the two 10mm nuts holding the bottom half of the airbox to the car.

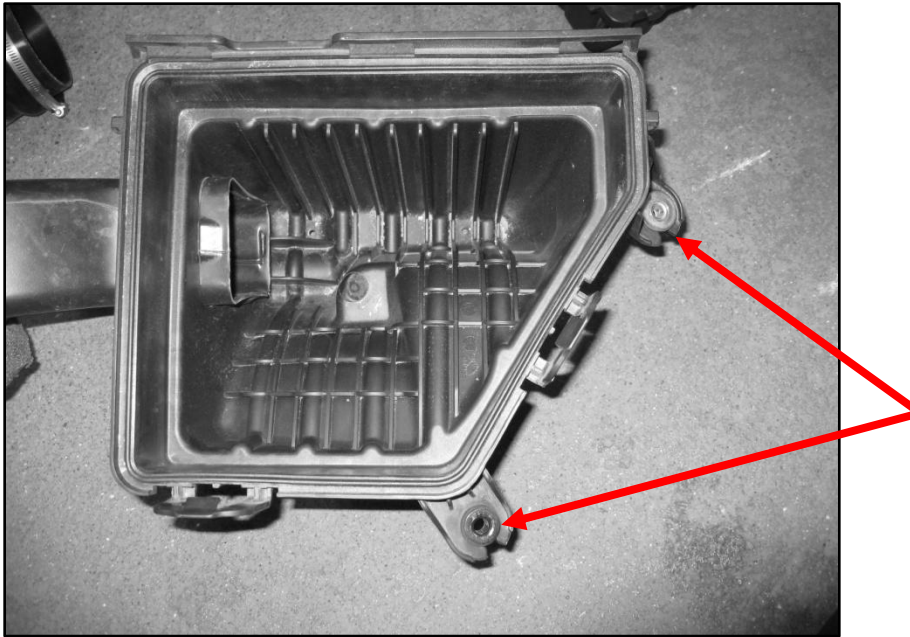


6. Remove the bottom half of the air box by pulling upwards.
7. There is a rubber grommet on the bottom of the airbox, it may stay in the car or it may have pulled out with the airbox. If it pulled out, remove it from the airbox and install it back into the hole on the body.

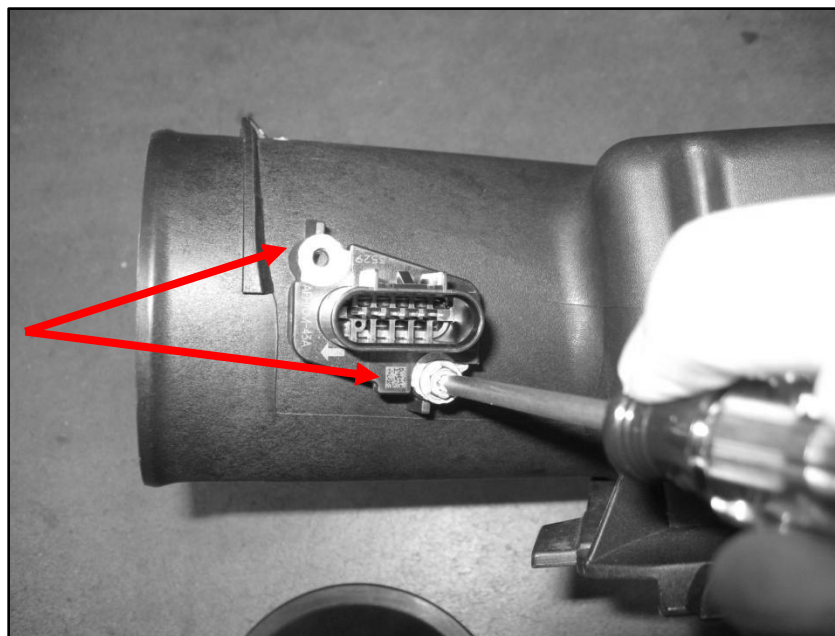




8. Remove the two grommets from the stock airbox; do not discard these as they will be used during the installation.



9. Remove the two screws retaining the mass air flow sensor; do not discard the screws, they will be used again during the installation.

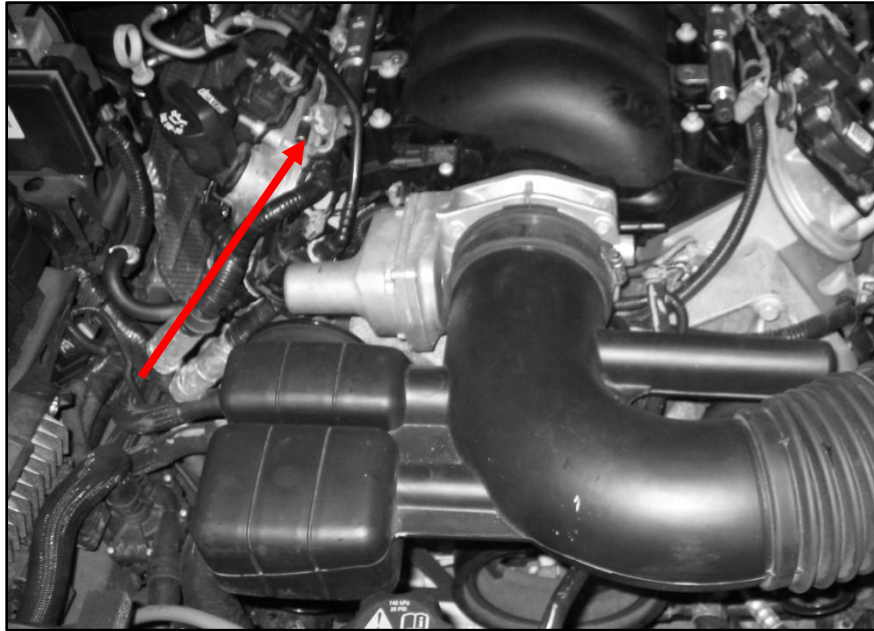


10. Carefully remove the mass air flow sensor and set in a safe place.

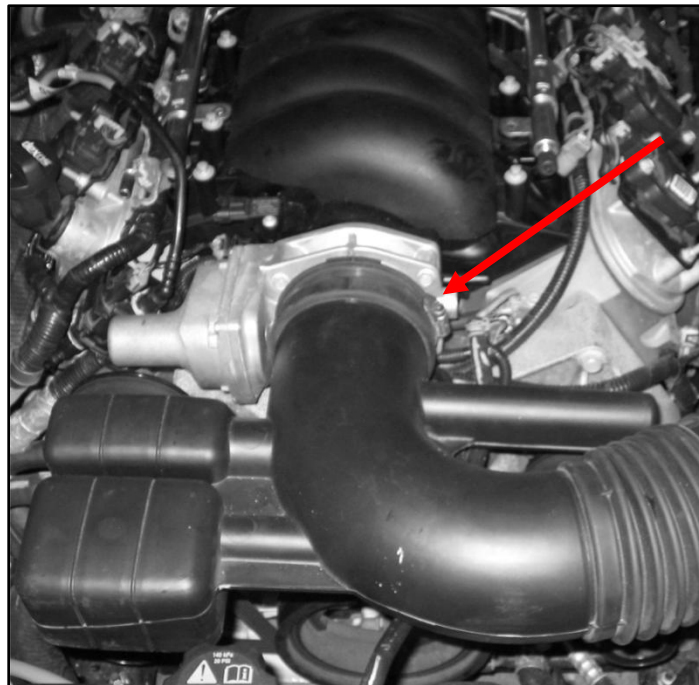


If you are installing the Blackwing intake tube on a naturally aspirated Camaro; follow the remaining removal steps.

11. Remove the PCV Fresh Air Connector located near the front of the passenger side cam cover.



12. Remove the intake tube by loosening the hose clamp holding the intake to the throttle body.

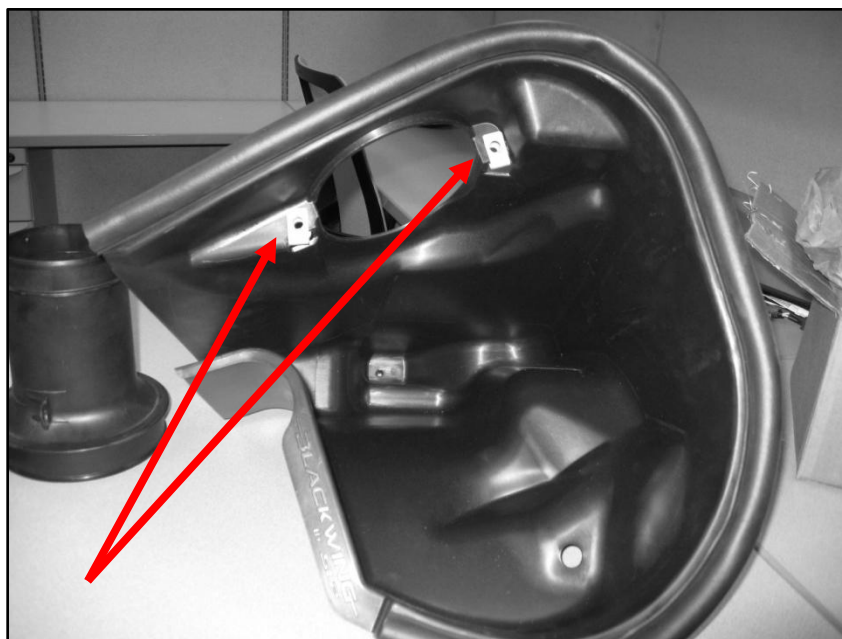




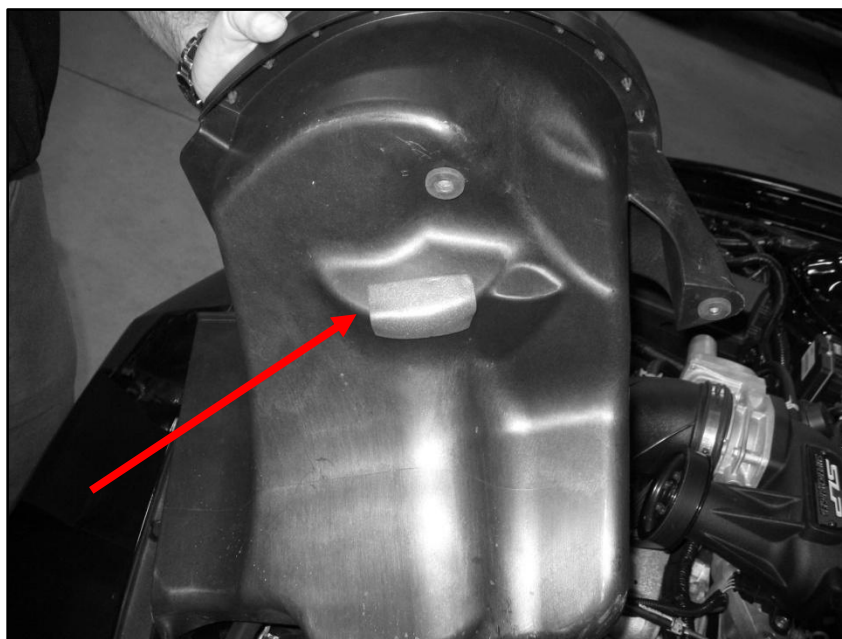


## Section B – Installation

1. Using the provided J-clips, install them on the airbox in the location shown.



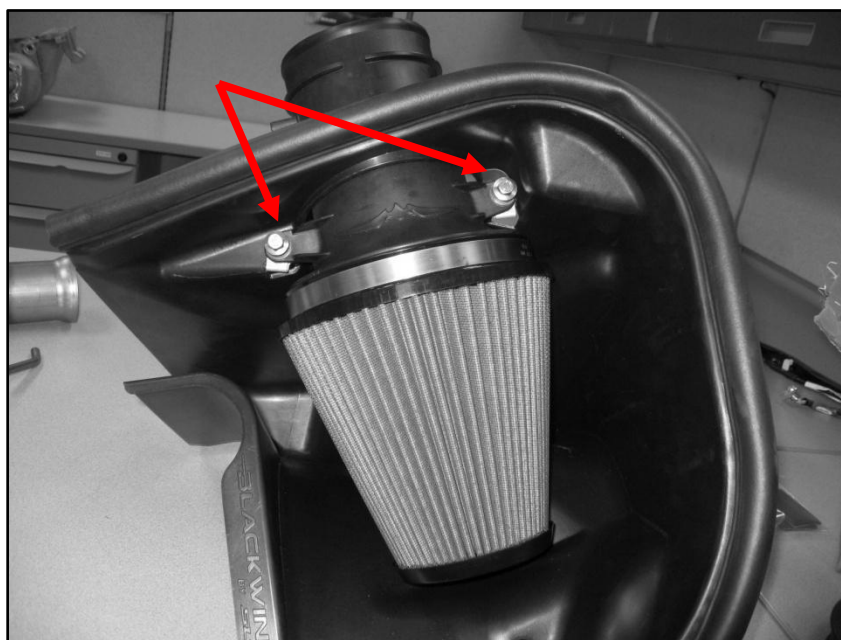
2. Install the foam pad in the area shown.



3. Install the air filter onto the mass air flow tube, tighten the clamp.

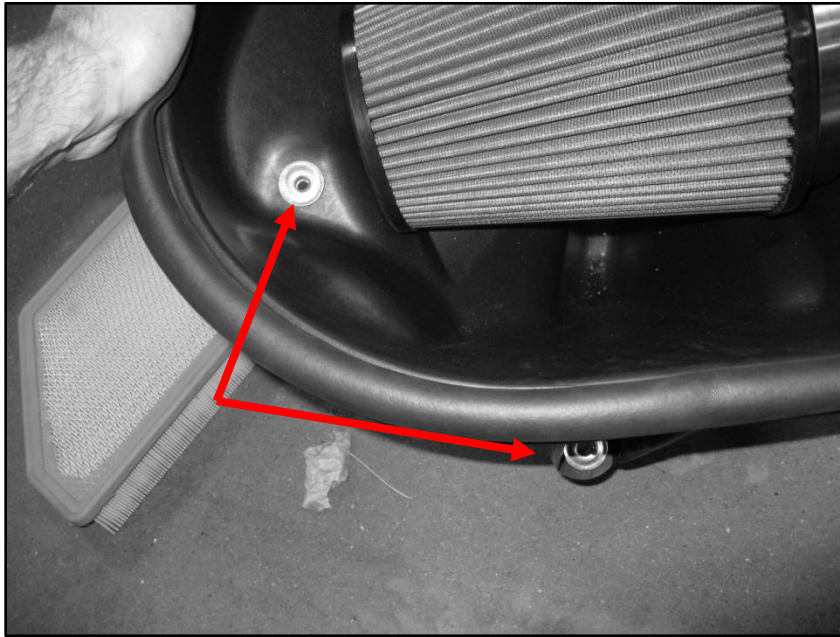


4. Install the mass air tube and filter into the airbox and tighten the two provided M8 bolts using a 10mm socket.

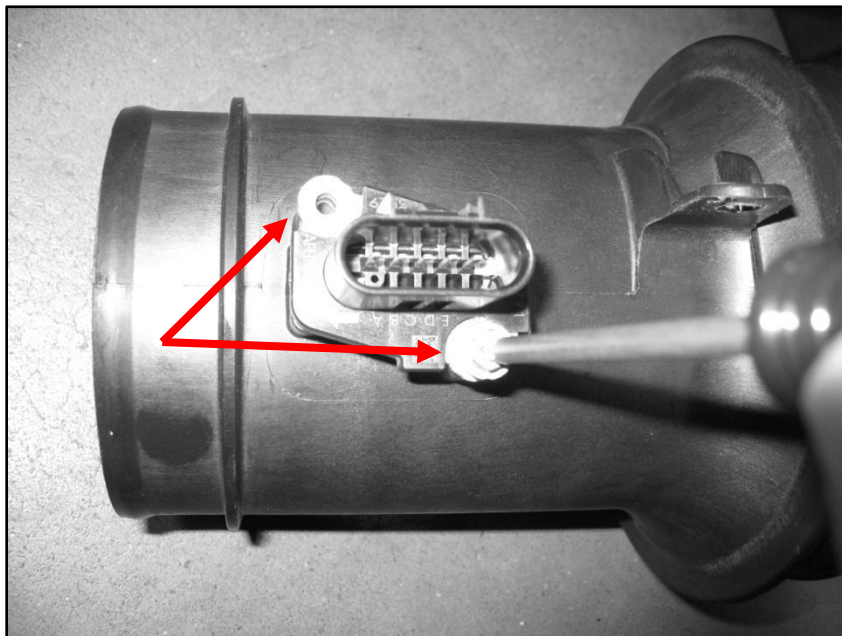




5. Using the two grommets removed from the stock air box, install them into the holes on the new airbox assembly.

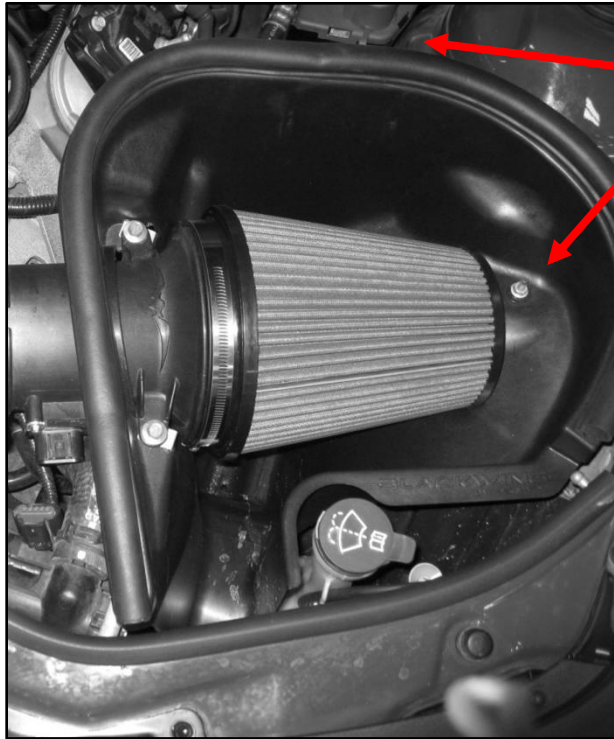


6. Install the mass air flow sensor into the tube and tighten the two(2) screws, do not over tighten. Make sure the arrow on the Mass Airflow Sensor is pointing away from the filter.





7. Install the air box assembly into the car and tighten the two nuts. Note, you cannot see the outside nut in the picture below



8. Connect the wire harness to the mass air flow sensor.

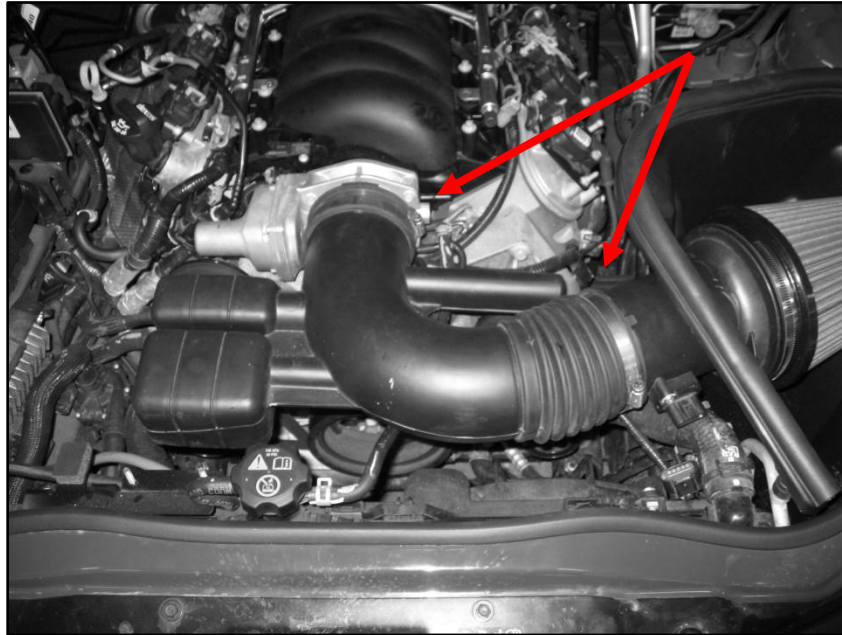




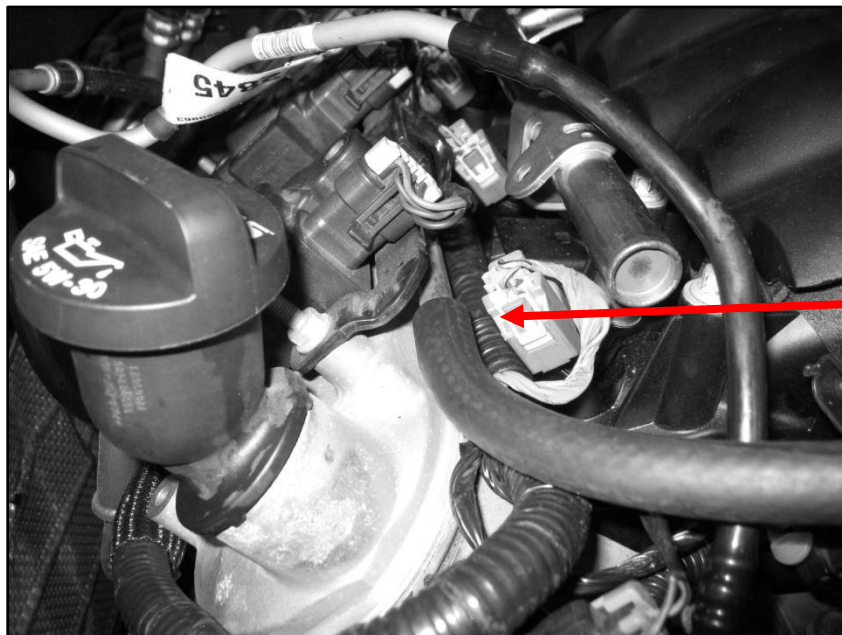


***If you are installing a Blackwing intake tube on a naturally aspirated car, skip to step 10, if not step 9 is your final step.***

9. Insert the mass air tube into the stock intake or SLP Supercharger clean air tube and tighten the hose clamps.



10. Push one end of the provided hose onto the PCV nipple where we previously removed the connector. Leave the rest of the hose loose, you will finish its installation later.







11. Install the silicone hump adapter onto the mass air tube and tighten the hose clamp.

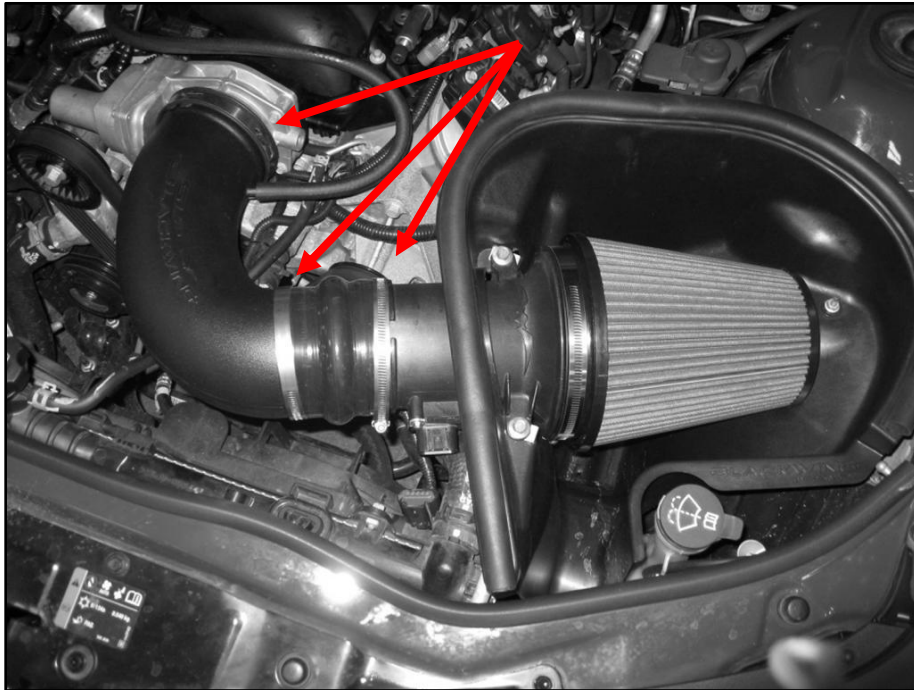


12. Install the rubber adapter gasket onto the slotted end of the intake tube.





13. Install the Blackwing intake tube into the hump adapter and onto the throttle body. Tighten the three hose clamps.



14. Route the PCV hose and attach it to the nipple on the intake tube.

