

2014 GM Truck Level 1 Performance Pack

Installation Instructions

P/N: 2414-PRFPC1-AA

Application: 2014+ Chevy Silverado and GMC Sierra 5.3L and 6.2L

Important Note:

Before installing your Blackwing cold air intake, read through the entire installation procedure and check to make sure all items are present. Contact Blackwing Customer Service at 1-855-SLP-PERF, weekdays from 9:00 AM to 5:00 PM EST, with any questions regarding fit, missing parts or instructions that are unclear to you. Premium fuel required.



TABLE OF CONTENTS

Packing List for 2014 GM Truck Cold Air Intake3
Equipment and Supplies Required.....3
Limit of Liability Statement.....4
Safety Precautions4
Work Safely!4
Section A – Removal5
Section B – Installation.....7
Vehicle Calibration Information.....11
Updating SCT Device.....11
Obtaining Your Factory Calibration11
Programming the Vehicle14

PACKING LIST FOR 2014 GM TRUCK COLD AIR INTAKE

Description	Part Number	Quantity
Air Box	2414-9A612	1
Filter Tube	131550-12B579HC	1
Clean Air Tube	2414-9B659	1
Filter with Clamp	997-494-BLK	1
Handheld Programmer	7416-INST	1
Hardware Kit – Clean Air Tube	2414-9600HKA	1
Coupler – 6.2L T-Body-to-Clean Air Tube	241462-9B662	1
Coupler – 5.3L T-Body-to-Clean Air Tube	241453-9B662	1
Coupler – Filter Tube-to-Clean Air Tube	2414-9B661	1
Clamp – 100 mm-120 mm	R07130028-13	1
Clamp – 90 mm-110 mm	0403516	3
Fitting – 16 mm Quick Connect	1311-9N285	2
Grommet – PCV Fitting	1150-58GRMT	2
Hardware Kit – Cold Air Kit	2414-9600HKB	1
PCV Line – Passenger Side	2414-6757	1
PCV Line – Driver Side	2414-6758	1
Bolt – MAF to Air Box	W500224	2
Clamp – 24 mm CT	CTB24STFK	4
J-Clip – M6	95210A175	1
Bolt – M6 x 1 x 16	N605891-S437	1
Grommet	9600K53	1
Seal – Air Box Bulb Seal 25 mm	2414-9B624	1
Seal – Air Box Inlet	2414-9F763	1

EQUIPMENT AND SUPPLIES REQUIRED

- 1/4" Drive Socket Set
- T-15 Torx Bit
- Pliers
- Razor Blade
- Flat-head Screwdriver
- Trim Tool

If you are missing any items, please call us toll free at 1-855-SLP-PERF.

LIMIT OF LIABILITY STATEMENT

The information contained in this publication was accurate and in effect at the time the publication was approved for printing and is subject to change without notice or liability. Straight Line Performance (SLP) reserves the right to revise the information presented herein or to discontinue the production of parts described at any time.

SAFETY PRECAUTIONS



CAREFULLY READ THE IMPORTANT SAFETY PRECAUTIONS and WARNINGS BEFORE PROCEEDING WITH THE INSTALLATION!

Appropriate disassembly, assembly methods and procedures are essential to ensure the personal safety of the individual performing the kit installation. Improper installation due to the failure to correctly follow these instructions could cause personal injury or death. Read each step of the installation manual carefully before starting the installation.

- Always wear safety glasses for eye protection.
- Place ignition switch in the OFF position.
- Always apply the parking brake when working on a vehicle.
- Block the front and rear tire surface to prevent unexpected vehicle movement.
- If working with a lift, always consult vehicle manual for correct lifting specifications.
- Operate the engine only in well-ventilated areas to avoid exposure to carbon monoxide.
- Do not smoke or use flammable items near or around the fuel system.
- Use chemicals and cleaners in well-ventilated areas.
- Batteries produce explosive gases, which can cause personal injury. Therefore, do not allow flames, sparks or flammable substances to come near the battery.
- Keeps hands and any other objects away from the radiator fan blades.
- Keep yourself and your clothing away from moving parts when the engine is running.
- Do not wear loose clothing or jewelry that can get caught in rotating parts or scratch surface finishes.
- Allow the engine, cooling system, brakes and exhaust to cool before working on a vehicle.

WORK SAFELY!

Perform this installation on a good clean level surface for maximum safety and with the engine turned off.

SECTION A – REMOVAL

The following section will guide you through the disassembly of the stock components. Special care should be taken to label fasteners and parts that are taken off during this procedure since many will be reused.

1. Cover both fenders with fender covers to protect the vehicle finish.
2. Disconnect the battery ground cable.
3. Disconnect the MAF sensor connector.



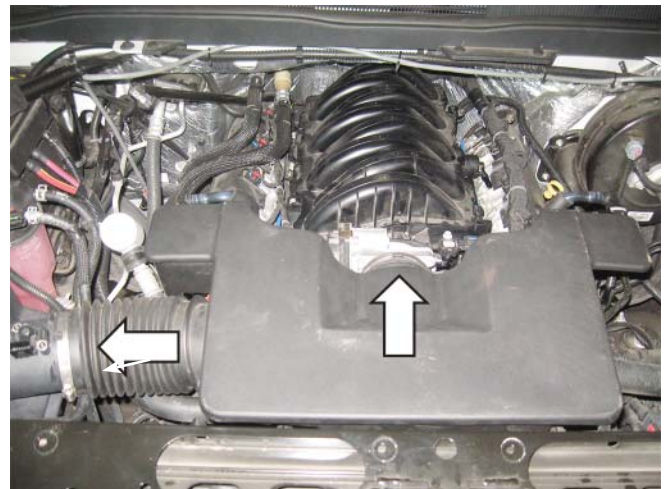
4. Using the T-15 Torx bits, remove the two (2) screws retaining the MAF sensor. Retain screws for installation.



5. Remove the MAF sensor and retain for installation.



6. Loosen the clamps retaining the clean air tube to the air box and throttle body.



7. Disconnect the quick connect fitting on the driver side of the clean air tube.



8. Disconnect the quick connect fitting on the passenger side of the clean air tube.



9. Remove the clean air tube from the vehicle.



10. Remove the two (2) bolts holding the fender brace in place.



11. Remove the air box assembly from the vehicle, by pulling up. It is held in place by three (3) barb fittings.



12. Disconnect and remove the PCV from the driver side valve cover. Retain for installation.



13. Disconnect and remove the PCV line from the passenger side valve cover.



- Using a razor, score the PCV lines just removed then pull out the quick connect fittings. Retain the fittings for installation.



- Insert one (1) straight quick connect and one 90-degree quick connect to each of the supplied PCV hoses (P/N: 2414-6757, 2414-6758). Use the supplied hose camps (P/N: CTB24STFK) to attach the fittings.

- Remove the two (2) bolts holding the retaining support bracket between the radiator support and the fender.



SECTION B – INSTALLATION

- Install two (2) rubber grommets (P/N: 1150-58GRMT) and fittings (P/N: 1311-9N285) into the clean air tube (P/N: 2414-9B659). **Tip:** Use glass cleaner or spray lubricant on the parts to help installation.

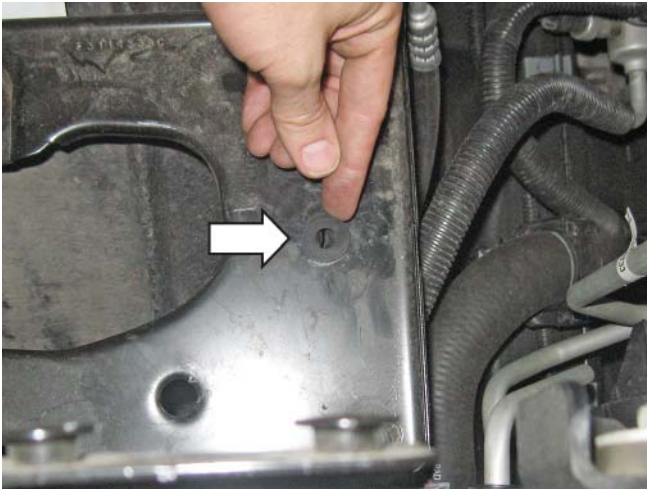


- Install the J-clip (P/N: 95210A175) into the air box tray as shown.



- Install the filter tube-to-clean air tube coupler (PN: 2414-9B661) on the straight part of the tube and the throttle body-to-clean air tube coupler on the bent side. You will use either P/N: 241462-9B662 or P/N: 241453-9B662 depending on the engine size. Tighten the inside hose clamps to 3 Nm and leave the outside loose.

- Install the grommet (P/N: 9600K53) into the air box tray (P/N: 2414-9A612) as shown.



6. Place the bulb seal (P/N: 2414-9B624) onto the top of the air box and clip into the holes. Trim ends as required.



8. Insert the air box assembly into the vehicle, push down to seat the posts into the grommets.



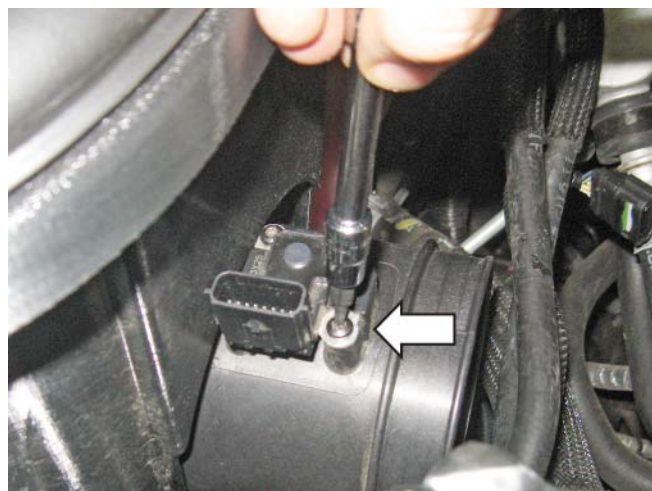
7. Clean off the fender well, then attach the inlet seal (P/N: 2414-9F673) as shown.



9. Thread and tighten the provided M6 bolt (P/N: N605891-S437) into the bottom of the air box. Tighten to 10 Nm.



10. Insert the filter tube (P/N: 131550-12B579HC) into the air box tray.



13. Using the two (2) M8 bolts (P/N: W500224), attach the filter tube to the air box. Tighten to 10 Nm.

11. Install the air filter (P/N: 997-494-BLK) onto the filter tube. Make sure the metal rib on the filter points down when the filter tube is oriented as shown. Tighten the filter clamp to 3 Nm.

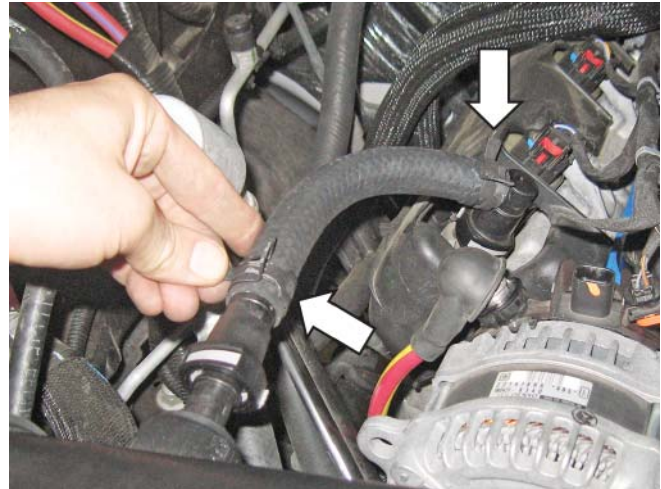


14. Tighten the hose clamp attaching the clean air tube to the filter tube. Tighten to 3 Nm.

12. Install the MAF sensor into the filter tube. Tighten the screws to 2 Nm.



15. Tighten the clamp retaining the coupler to the throttle body. Tighten to 3 Nm.



18. Reinstall the support brace between the core support and fender.

16. Install the driver side PCV hose (P/N: 2414-6758) between the quick connect bars on the valve cover and clean air tube assembly.



19. The installation is now complete!

17. Install the passenger side PCV hose (P/N: 2414-6757) between the quick connect bars on the valve cover and clean air tube assembly.

VEHICLE CALIBRATION INFORMATION

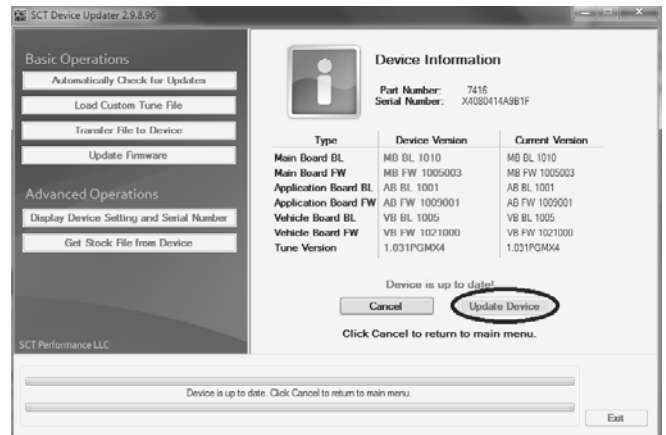
THIS KIT WAS SHIPPED WITH AN UNPROGRAMMED SCT HAND HELD PROGRAMMING DEVICE (7416-INST). THE DEVICE MAY NOT HAVE THE LATEST SOFTWARE INSTALLED. FAILURE TO UPDATE SCT DEVICE MAY RESULT IN ECM DAMAGE. PRIOR TO BEGINNING THE INSTALLATION OF THIS KIT, PLEASE PROCEED WITH THE FOLLOWING STEPS. THIS SHOULD BE DONE IN ADVANCE OF ANY VEHICLE DISASSEMBLY TO AVOID DELAYS DURING YOUR INSTALLATION. CALIBRATION SUPPORT IS PROVIDED MONDAY-FRIDAY 8 AM TO 5 PM EST.

UPDATING SCT DEVICE

1. Make sure you have the SCT updater software installed on your Windows PC. If you do not have it, follow this link: www.sctflash.com/software/SCTDeviceUpdater.exe.
2. After downloading and installing the update software, open the program. There should be an icon on the desktop.
3. Once updater is open on the desktop, plug in the device.
4. With the device plugged in, select “Automatically Check for Updates” from the Basic Operations menu.



5. The device should start to update. Notice the bottom bar, it will let you know what part of the update it's on. This can take some time, so be patient. The Internet connection and computer speed can impact updating times. Average time is 5-10 minutes.



6. The SCT Device Updater window displays “Device is up to date” when the update is done.

OBTAINING YOUR FACTORY CALIBRATION

1. Plug the SCT programmer (7416-INST) into the OBD port of the vehicle to which the supercharger kit will be installed.
2. Select “Program Vehicle” from the Menu screen. Select “Upload Stock” to accept the terms of usage.



3. When prompted, turn the ignition to the **KEY ON** position and press “Continue”. **DO NOT START THE ENGINE.**



4. Wait for the programmer to finish saving stock data.



6. The upload is complete. Press "Continue" and then "Done".



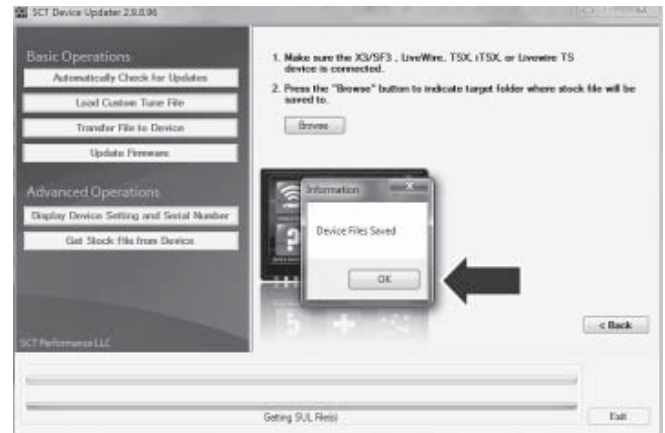
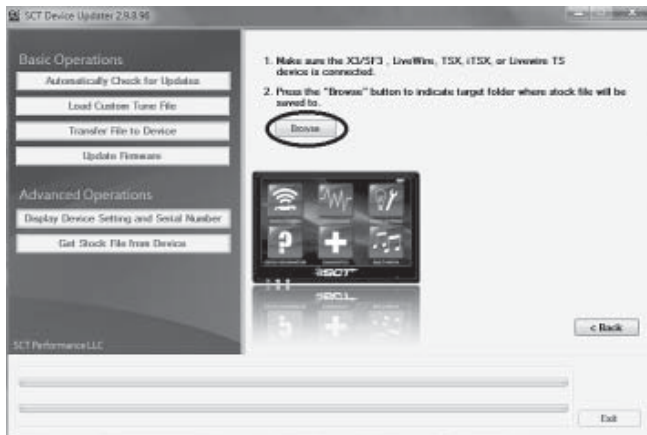
5. Turn the ignition to the **KEY OFF** position, press "Continue" and wait for the vehicle to power down.



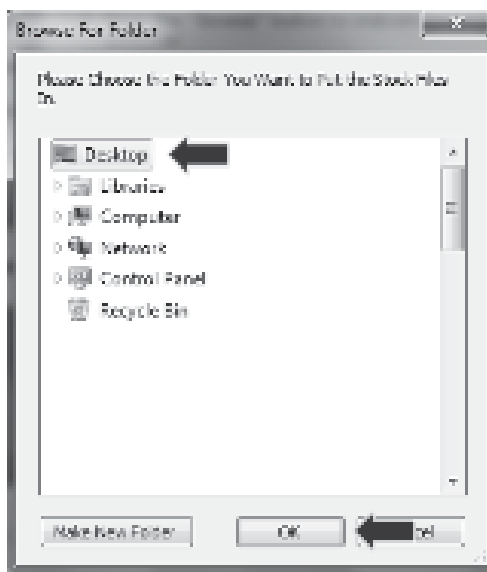
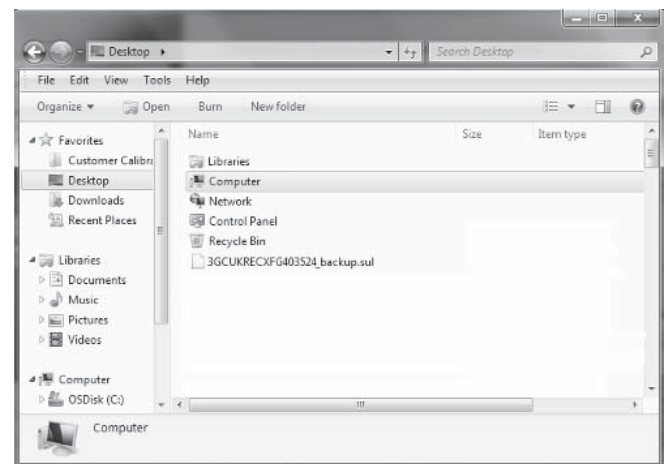
7. Disconnect the programmer from the vehicle. Reconnect it to the Windows PC and open the same update software used in step 2 of "Updating SCT Device".
8. Select "Get Stock File from Device" from the Basic Operations menu.



9. Select “Browse” and save the stock file to the desktop.



10. Add the text “backup” to the file name that contains the VIN number and e-mail a copy of the file to “tune@slponline.com”. In the e-mail subject line, write: Calibration Request for Kit # XXXXXX (Enter Kit P/N).

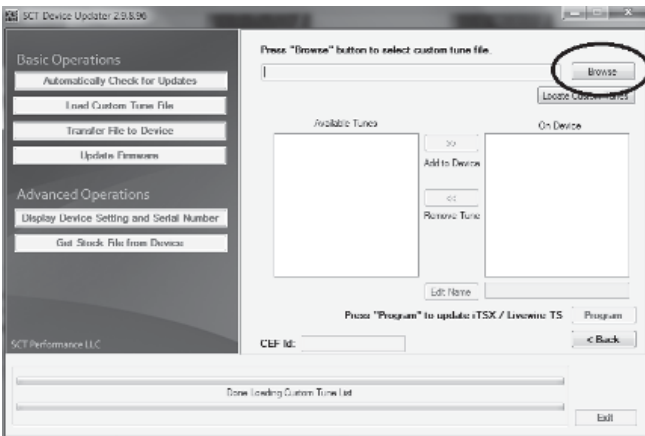


11. SLP will reply to your e-mail within one (1) business day (Monday to Friday, 8 AM to 5 PM EST) with the calibration file for the vehicle.
12. **FAILURE TO FOLLOW THE ABOVE STEPS MAY DELAY THE INSTALLATION OF THIS KIT. SLP NEEDS THIS DATA IN ORDER TO PROVIDE THE LATEST CALIBRATION FILES AVAILABLE FOR THE VEHICLE. IF YOU HAVE A NEW MODEL YEAR VEHICLE THAT IS NOT YET AVAILABLE IN OUR DATABASE, THE TURN AROUND TIME FOR THE CALIBRATION MAY EXCEED ONE (1) BUSINESS DAY. IF THE CALIBRATION IS NOT YET SUPPORTED, SLP WILL NOTIFY YOU OF THIS DELAY AS TO NOT CAUSE YOUR VEHICLE FROM BEING IMMOBILIZED DURING THIS TIME.**
13. Save a copy of the file attached to the e-mail sent back from SLP to the PC desktop. This is the new calibration file.

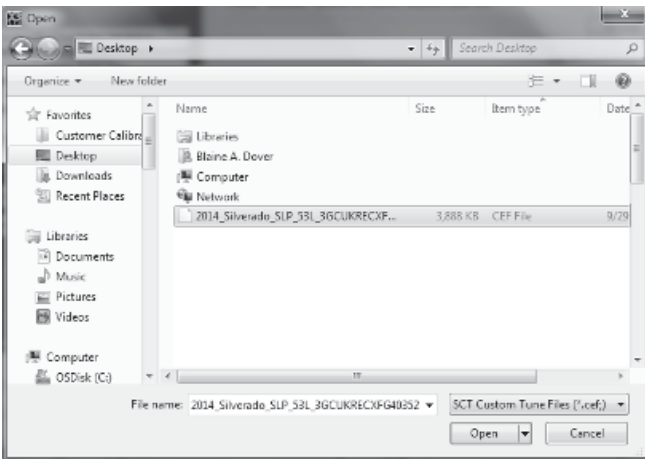
14. Plug the SCT device into the PC.
15. Open the SCT updater software and select "Load Custom Tune File".



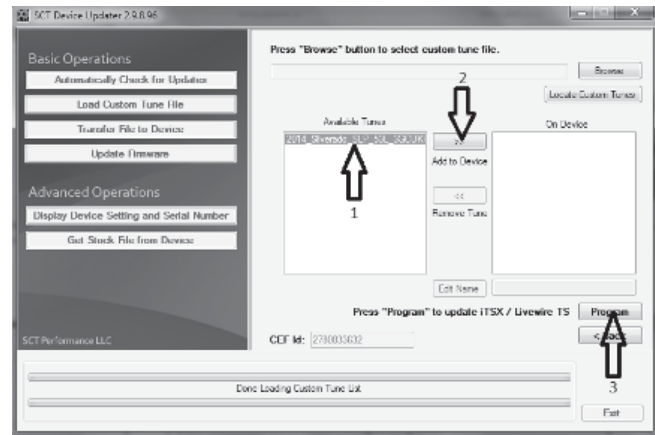
16. Select "Locate Custom Tune".



17. Locate and open the file that was attached in the e-mail sent back from SLP on the PC.



18. Select the tune from the left column (#1). Select the right arrows (#2). Select "Program" (#3).



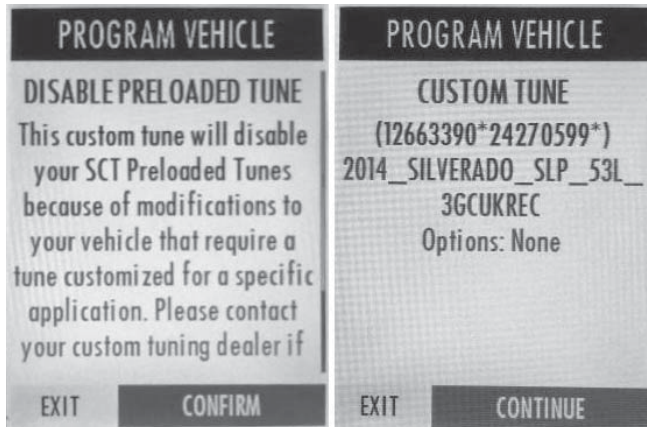
19. The device is ready to reprogram the vehicle.

PROGRAMMING THE VEHICLE

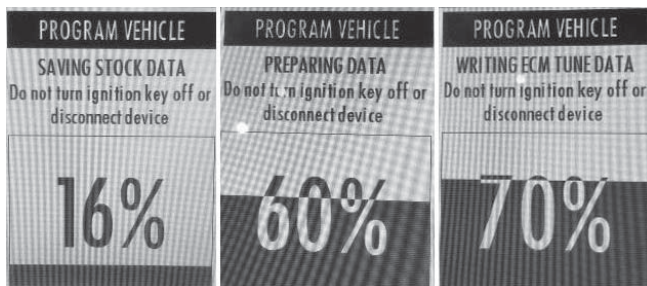
1. Plug the SCT programmer (7416-INST) into the OBD port of the vehicle that is to be calibrated.
2. Select "Program Vehicle" from the Main Menu screen. Select the SLP custom tune.



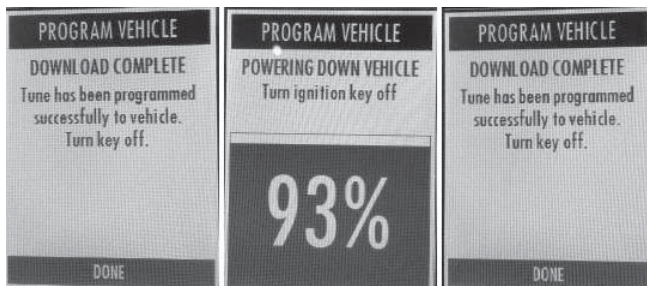
3. Select "Confirm", then Select "Continue".



4. Wait for the programmer to finish the flashing process.



5. When prompted, turn the ignition key to the **OFF** position and unplug the SCT programmer from the OBD port.



6. Select "Done". Programming is complete.