

# 2014 GM Truck Level 1 Performance Pack

## Installation Instructions

P/N: 2414-PRFPC1-AA

**Application:** 2014+ Chevy Silverado and GMC Sierra 5.3L and 6.2L

**Important Note:**

Before installing your Blackwing cold air intake, read through the entire installation procedure and check to make sure all items are present. Contact Blackwing Customer Service at 1-855-SLP-PERF, weekdays from 9:00 AM to 5:00 PM EST, with any questions regarding fit, missing parts or instructions that are unclear to you.



**CONTENTS**

Packing List for 2014 GM Truck Cold Air Intake .....3

Equipment and Supplies Required.....3

Limit of Liability Statement.....4

Safety Precautions .....4

Work Safely! .....4

Section A – Removal .....5

Section B – Installation.....7

Packaging List for 4.3L/5.3L V8 Exhaust Kit 620074 (99-47)..... 12

Packaging List for 6.2L V8 Exhaust Kit 620080 (99-139)..... 12

Equipment and Supplies Required..... 12

Limit of Liability Statement..... 13

Safety Precautions ..... 13

Work Safely! ..... 13

Original Exhaust System Removal ..... 14

SLP Exhaust System Installation..... 14

Vehicle Calibration Information..... 17

Updating SCT Device..... 17

Obtaining Your Factory Calibration ..... 17

Programming the Vehicle .....20

**PACKING LIST FOR 2014 GM TRUCK COLD AIR INTAKE**

Description	Part Number	Quantity
Air Box	2414-9A612	1
Filter Tube	131550-12B579HC	1
Clean Air Tube	2414-9B659	1
Filter with Clamp	997-494-BLK	1
Handheld Programmer	7416-INST	1
Hardware Kit – Clean Air Tube	2414-9600HKA	1
Coupler – 6.2L T-Body-to-Clean Air Tube	241462-9B662	1
Coupler – 5.3L T-Body-to-Clean Air Tube	241453-9B662	1
Coupler – Filter Tube-to-Clean Air Tube	2414-9B661	1
Clamp – 100 mm-120 mm	R07130028-13	1
Clamp – 90 mm-110 mm	0403516	3
Fitting – 16 mm Quick Connect	1311-9N285	2
Grommet – PCV Fitting	1150-58GRMT	2
Hardware Kit – Cold Air Kit	2414-9600HKB	1
PCV Line – Passenger Side	2414-6757	1
PCV Line – Driver Side	2414-6758	1
Bolt – MAF to Air Box	W500224	2
Clamp – 24 mm CT	CTB24STFK	4
J-Clip – M6	95210A175	1
Bolt – M6 x 1 x 16	N605891-S437	1
Grommet	9600K53	1
Seal – Air Box Bulb Seal 25 mm	2414-9B624	1
Seal – Air Box Inlet	2414-9F763	1

**EQUIPMENT AND SUPPLIES REQUIRED**

- 1/4" Drive Socket Set
- T-15 Torx Bit
- Pliers
- Razor Blade
- Flat-head Screwdriver
- Trim Tool

**If you are missing any items, please call us toll free at 1-855-SLP-PERF.**

## LIMIT OF LIABILITY STATEMENT

The information contained in this publication was accurate and in effect at the time the publication was approved for printing and is subject to change without notice or liability. Straight Line Performance (SLP) reserves the right to revise the information presented herein or to discontinue the production of parts described at any time

## SAFETY PRECAUTIONS



### **CAREFULLY READ THE IMPORTANT SAFETY PRECAUTIONS and WARNINGS BEFORE PROCEEDING WITH THE INSTALLATION!**

Appropriate disassembly, assembly methods and procedures are essential to ensure the personal safety of the individual performing the kit installation. Improper installation due to the failure to correctly follow these instructions could cause personal injury or death. Read each step of the installation manual carefully before starting the installation.

- Always wear safety glasses for eye protection.
- Place ignition switch in the OFF position.
- Always apply the parking brake when working on a vehicle.
- Block the front and rear tire surface to prevent unexpected vehicle movement.
- If working with a lift, always consult vehicle manual for correct lifting specifications.
- Operate the engine only in well-ventilated areas to avoid exposure to carbon monoxide.
- Do not smoke or use flammable items near or around the fuel system.
- Use chemicals and cleaners in well-ventilated areas.
- Batteries produce explosive gases, which can cause personal injury. Therefore, do not allow flames, sparks or flammable substances to come near the battery.
- Keeps hands and any other objects away from the radiator fan blades.
- Keep yourself and your clothing away from moving parts when the engine is running.
- Do not wear loose clothing or jewelry that can get caught in rotating parts or scratch surface finishes.
- Allow the engine, cooling system, brakes and exhaust to cool before working on a vehicle.

## **WORK SAFELY!**

Perform this installation on a good clean level surface for maximum safety and with the engine turned off.

## SECTION A – REMOVAL

The following section will guide you through the disassembly of the stock components. Special care should be taken to label fasteners and parts that are taken off during this procedure since many will be reused.

1. Cover both fenders with fender covers to protect the vehicle finish.
2. Disconnect the battery ground cable.
3. Disconnect the MAF sensor connector.



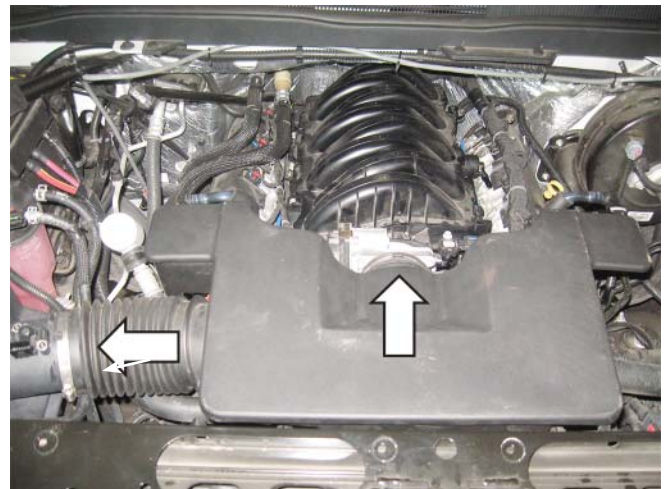
4. Using the T-15 Torx bits, remove the two (2) screws retaining the MAF sensor. Retain screws for installation.



5. Remove the MAF sensor and retain for installation.



6. Loosen the clamps retaining the clean air tube to the air box and throttle body.



7. Disconnect the quick connect fitting on the driver side of the clean air tube.





8. Disconnect the quick connect fitting on the passenger side of the clean air tube.



9. Remove the clean air tube from the vehicle.



10. Remove the two (2) bolts holding the fender brace in place.



11. Remove the air box assembly from the vehicle, by pulling up. It is held in place by three (3) barb fittings.



12. Disconnect and remove the PCV from the driver side valve cover. Retain for installation.



13. Disconnect and remove the PCV line from the passenger side valve cover.





- Using a razor, score the PCV lines just removed then pull out the quick connect fittings. Retain the fittings for installation.



- Insert one (1) straight quick connect and one 90-degree quick connect to each of the supplied PCV hoses (P/N: 2414-6757, 2414-6758). Use the supplied hose camps (P/N: CTB24STFK) to attach the fittings.

- Remove the two (2) bolts holding the retaining support bracket between the radiator support and the fender.



## SECTION B – INSTALLATION

- Install two (2) rubber grommets (P/N: 1150-58GRMT) and fittings (P/N: 1311-9N285) into the clean air tube (P/N: 2414-9B659). **Tip:** Use glass cleaner or spray lubricant on the parts to help installation.

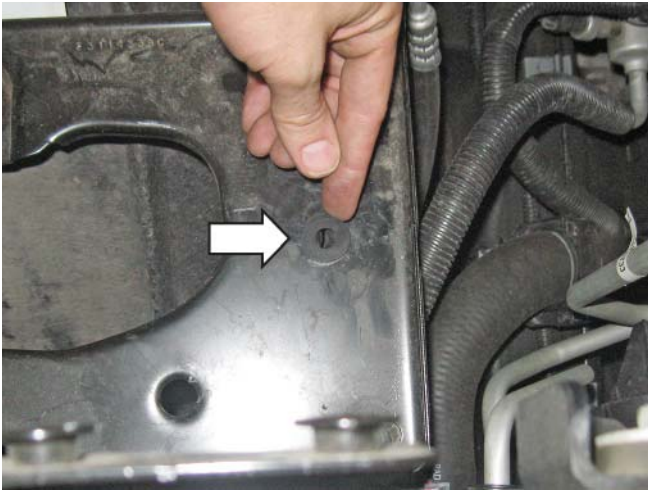


- Install the J-clip (P/N: 95210A175) into the air box tray as shown.



- Install the filter tube-to-clean air tube coupler (PN: 2414-9B661) on the straight part of the tube and the throttle body-to-clean air tube coupler on the bent side. You will use either P/N: 241462-9B662 or P/N: 241453-9B662 depending on the engine size. Tighten the inside hose clamps to 3 Nm and leave the outside loose.

- Install the grommet (P/N: 9600K53) into the air box tray (P/N: 2414-9A612) as shown.



6. Place the bulb seal (P/N: 2414-9B624) onto the top of the air box (P/N: 2414-9A612) and clip into the holes. Trim ends as required.



8. Insert the air box assembly into the vehicle, push down to seat the posts into the grommets.



7. Clean off the fender well, then attach the air box inlet seal (P/N: 2414-9F673) as shown.

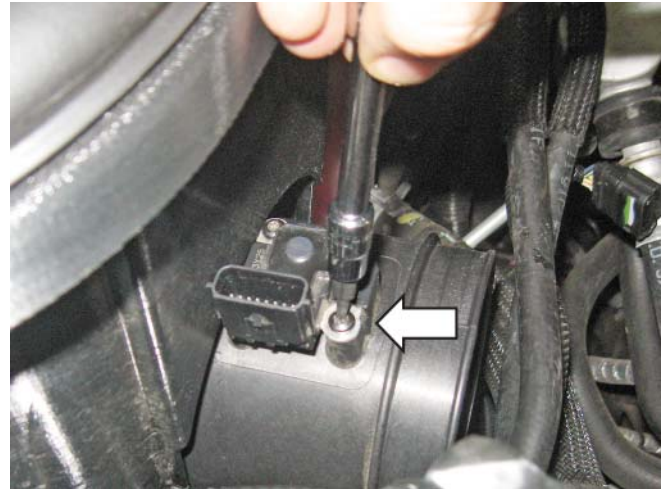


9. Thread and tighten the provided M6 bolt (P/N: N605891-S437) into the bottom of the air box. Tighten to 10 Nm.





10. Insert the filter tube (P/N: 131550-12B579HC) into the air box tray.



13. Using the two (2) M8 bolts (P/N: W500224), attach the filter tube to the air box. Tighten to 10 Nm.

11. Install the air filter (P/N: 997-494-BLK) onto the filter tube. Make sure the metal rib on the filter points down when the filter tube is oriented as shown. Tighten the filter clamp to 3 Nm.



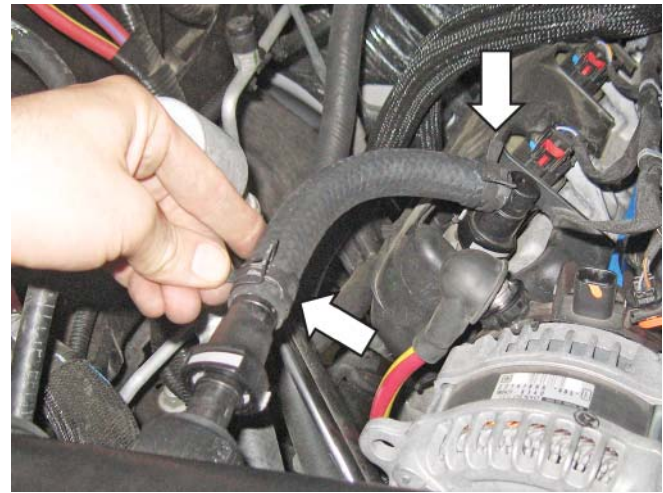
14. Tighten the hose clamp attaching the clean air tube to the filter tube. Tighten to 3 Nm.

12. Install the MAF sensor into the filter tube. Tighten the screws to 2 Nm.





15. Tighten the clamp retaining the coupler to the throttle body. Tighten to 3 Nm.



18. Reinstall the support brace between the core support and fender.

16. Install the driver side PCV hose (P/N: 2414-6758) between the quick connect bars on the valve cover and clean air tube assembly.



19. The installation is now complete!

17. Install the passenger side PCV hose (P/N: 2414-6757) between the quick connect bars on the valve cover and clean air tube assembly.

# 2014+ GM Truck Cat Back Exhaust Kit 4.3L/5.3L/6.2L

## Installation Instructions

P/N: 620074 (99-47) 4.3L/5.3L,  
620080 (99-139) 6.2L



**Application:** 2014+ Chevrolet Silverado/GMC Sierra equipped with the 4.3L/5.3L/6.2L

**Important Note:**

Before installing your SLP exhaust, please read through the entire installation procedure and check to make sure all items are present. Contact SLP Customer Service at 1-855-SLP-PERF, 9:00 AM to 5:00 PM EST weekdays, for any questions regarding fit or instructions that are unclear to you.





**NOTE:** All illustrations in this manual are representative of the 2014+ GMT SLP cat back exhaust systems.

**PACKAGING LIST FOR 4.3L/5.3L V8 EXHAUST KIT 620074 (99-47)**

Description	Part Number	Quantity
Inlet Pipe – 119" and 133" WB	5-46	1
Inlet Pipe – 143.5" and 153.5" WB	5-47	1
Hanger – 119" WB	6-1	1
Hanger – 133" WB	6-2	1
Muffler	1115-5230	1
Over-Axle Pipe	5-48	1
Exhaust Tip (SLP Etched)	310305787	1
Clamp – 3" Diameter	10-0439	3
Clamp – Ball Flange	93-0088	1

**PACKAGING LIST FOR 6.2L V8 EXHAUST KIT 620080 (99-139)**

Description	Part Number	Quantity
Inlet Pipe – 119" and 133" WB	5-68	1
Inlet Pipe – 143.5" and 153.5" WB	5-69	1
Hanger – 119" WB	6-1	1
Hanger – 133" WB	6-2	1
Muffler	1115-5230	1
Over-Axle Pipe	5-48	1
Exhaust Tip (SLP Etched)	310305787	1
Clamp – 3" Diameter	10-0439	3
Clamp – Ball Flange	05958081075	1

**EQUIPMENT AND SUPPLIES REQUIRED**

- 3/8" Drive Ratchet
- 3/8" Drive Extension 3"
- 13 mm and 15 mm Sockets
- Spray Lubricant (Soapy Water/Glass Cleaner)
- Reciprocating Saw ("Sawzall") or Equivalent Cutting Tool
- Tape Measure
- Marker Pen

**If you are missing any items, please call us toll free at 1-855-757-7373.**

## LIMIT OF LIABILITY STATEMENT

The information contained in this publication was accurate and in effect at the time the publication was approved for printing and is subject to change without notice or liability. Street Legal Performance (SLP) reserves the right to revise the information presented herein or to discontinue the production of parts described at any time.

## SAFETY PRECAUTIONS



### **CAREFULLY READ THE IMPORTANT SAFETY PRECAUTIONS and WARNINGS BEFORE PROCEEDING WITH THE INSTALLATION!**

Appropriate disassembly, assembly methods and procedures are essential to ensure the personal safety of the individual performing the kit installation. Improper installation due to the failure to correctly follow these instructions could cause personal injury or death. Read each step of the installation manual carefully before starting the installation.

- Always wear safety glasses for eye protection.
- Place ignition switch in the OFF position.
- Always apply the parking brake when working on a vehicle.
- Block the front and rear tire surface to prevent unexpected vehicle movement.
- If working with a lift, always consult vehicle manual for correct lifting specifications.
- Operate the engine only in well-ventilated areas to avoid exposure to carbon monoxide.
- Do not smoke or use flammable items near or around the fuel system.
- Use chemicals and cleaners in well-ventilated areas.
- Batteries produce explosive gases, which can cause personal injury. Therefore, do not allow flames, sparks or flammable substances to come near the battery.
- Keeps hands and any other objects away from the radiator fan blades.
- Keep yourself and your clothing away from moving parts when the engine is running.
- Do not wear loose clothing or jewelry that can get caught in rotating parts or scratch surface finishes.
- Allow the engine, cooling system, brakes and exhaust to cool before working on a vehicle.

## WORK SAFELY!

Perform this installation on a good clean level surface for maximum safety and with the engine turned off.

## ORIGINAL EXHAUST SYSTEM REMOVAL

1. Disconnect the ball flange clamp on the factory exhaust that connects the exhaust system to the catalyst pipe.



**NOTE:** Remove all of the protective plastic film from the muffler (P/N: 1115-5230) before installing.

2. Remove the factory exhaust by disconnecting each exhaust hanger from the exhaust system.

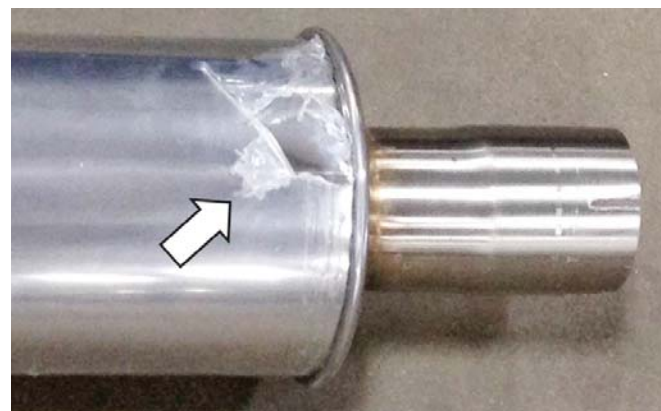
**NOTE:** The system can be removed as one (1) piece by removing it rearward over the rear axle. However, it may be easier to cut the system into two (2) pieces by cutting behind the muffler.

### **WARNING**

Use extreme caution during installation. Torque all fasteners according to manufacturer's torque values and tightening sequence. **DO NOT** use air impact tools to tighten fasteners on SLP Exhaust Systems. Use of such tools may result in bent flanges or gasket contact areas leading to exhaust leaks.

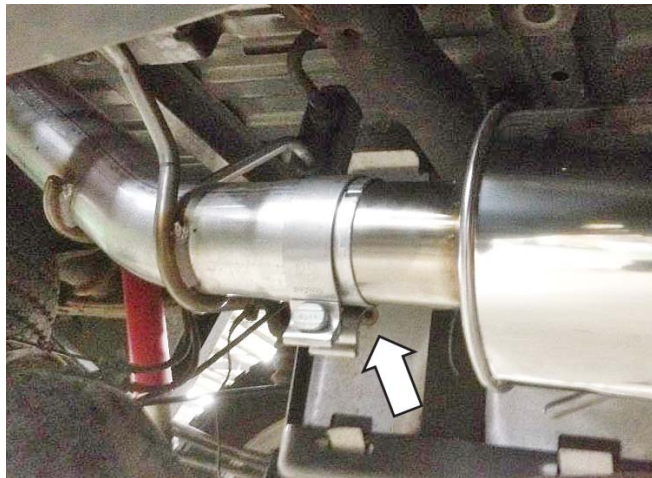
## SLP EXHAUST SYSTEM INSTALLATION

1. Install the over-axle pipe (P/N: 5-48) by inserting it into the three (3) factory rubber hanger mounts.

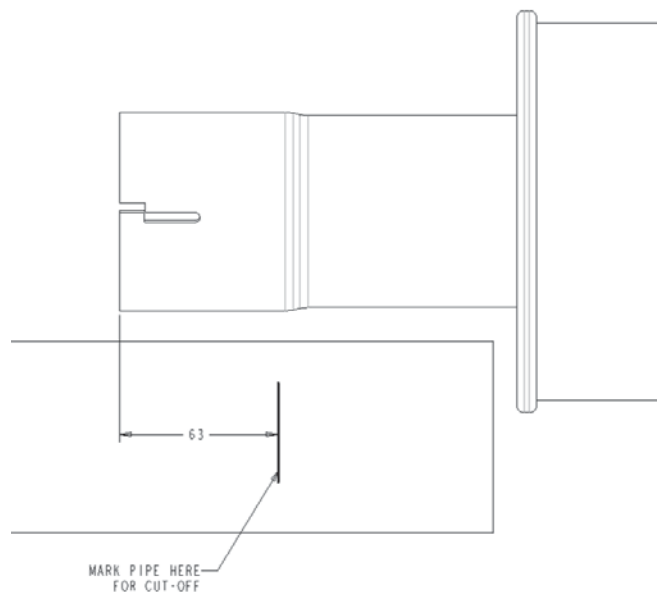


2. Place one (1) 3" clamp (P/N: 10-0439) onto the inlet side of the over-axle pipe. Install the muffler (P/N: 1115-5230) on the inlet side of the over-axle pipe until it completely bottoms out. Position the clamp on the joint and tighten to 30 Nm.





3. There are two (2) pipes provided in the kit to account for the four (4) different wheel base configurations. Trimming of this inlet pipe will be required for each specific vehicle. To mark the cut point on the inlet pipe, the muffler and over- axle pipe should be in position (rubber hangers are positioned vertically). Using the correct inlet pipe (P/N: 5-46, 119" and 133" WB, 4.3L/5.3L), (P/N: 5-47, 143.5" and 153.5" WB, 4.3L/5.3L), (P/N: 5-68, 119" and 133" WB, 6.2L) or (P/N: 5-69, 143.5" and 153.5" WB, 6.2L) for the vehicle wheel base, temporarily install the ball flare end of the inlet pipe against the catalyst flange and mark the inlet pipe, accounting for the 2-1/2" engagement into the muffler inlet for a proper seal. Remove the inlet pipe and cut it with a suitable cutting tool.



4. Place one (1) 3" clamp (P/N: 10-0439) onto the end of the trimmed inlet pipe and insert it into the muffler inlet. Loosely connect the ball flange to the catalyst flange using the ball flange clamp provided (P/N: 93-0088, 4.3L/5.3L) or (P/N: 05958081075, 6.2L). Insert the hanger into the factory rubber hanger mount. On 119" and 133" wheel base configurations, there will be an additional hanger located in front of the muffler. Use the correct hanger for use on the vehicle. Install the hanger clamp (P/N: 6-1, 119" WB) or (P/N: 6-2, 133" WB) on the pipe in position to support the exhaust. Position the clamps on the joint and tighten to 30 Nm.



5. Install one (1) 3" clamp (P/N: 10-0439) over the outlet of the over-axle pipe and install the tip (P/N: 310305787) onto the outlet end of the over-axle pipe. Position and orient the tip to the desired location. Position the clamp on the joint and tighten to 30 Nm.



Before starting the vehicle, make sure to check all wires, hoses, brake lines, body parts, tires and any other components for safe clearance from the exhaust system.

Start the vehicle and check for any exhaust leaks. If any leaks are found, determine the cause (such as insufficient pipe engagement, loose or incorrectly positioned clamp) and repair as necessary.

**Congratulations!!!** You have completed the installation of your SLP cat back exhaust kit. It is recommended that you save all parts removed from the vehicle during the installation of this kit.

## VEHICLE CALIBRATION INFORMATION

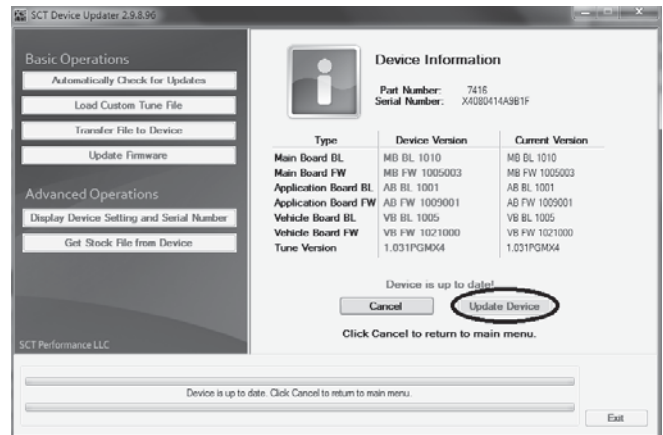
THIS KIT WAS SHIPPED WITH AN UNPROGRAMMED SCT HAND HELD PROGRAMMING DEVICE (7416-INST). THE DEVICE MAY NOT HAVE THE LATEST SOFTWARE INSTALLED. FAILURE TO UPDATE SCT DEVICE MAY RESULT IN ECM DAMAGE. PRIOR TO BEGINNING THE INSTALLATION OF THIS KIT, PLEASE PROCEED WITH THE FOLLOWING STEPS. THIS SHOULD BE DONE IN ADVANCE OF ANY VEHICLE DISASSEMBLY TO AVOID DELAYS DURING YOUR INSTALLATION. CALIBRATION SUPPORT IS PROVIDED MONDAY-FRIDAY 8 AM TO 5 PM EST.

## UPDATING SCT DEVICE

1. Make sure you have the SCT updater software installed on your Windows PC. If you do not have it follow this link: [www.sctflash.com/software/SCTDeviceUpdater.exe](http://www.sctflash.com/software/SCTDeviceUpdater.exe).
2. After downloading and installing the update software, open the program. There should be an icon on the desktop.
3. Once updater is open on your desktop, plug in your device.
4. With the device plugged in select automatically check for updates from the basic operations menu.



5. Your device should start to update. Notice the bottom bar, it will let you know what part of the update it's on. This can take some time so be patient. Your internet connection and computers speed can impact updating times. Average time is 5-10 minutes.



6. You know you are done when SCT device updater displays “Device is up to date”.

## OBTAINING YOUR FACTORY CALIBRATION

1. Plug the SCT programmer (7416-INST) into the OBD port of the vehicle the supercharger kit will be installed into.
2. Select “Program Vehicle” from the menu screen. Select “Upload Stock” to accept the terms of usage.



3. When prompted, turn the ignition to the **KEY ON** position and press “Continue”. **DO NOT START THE ENGINE.**





4. Wait for the programmer to finish saving stock data.



6. The upload is now complete. Press "Continue" and then "Done".



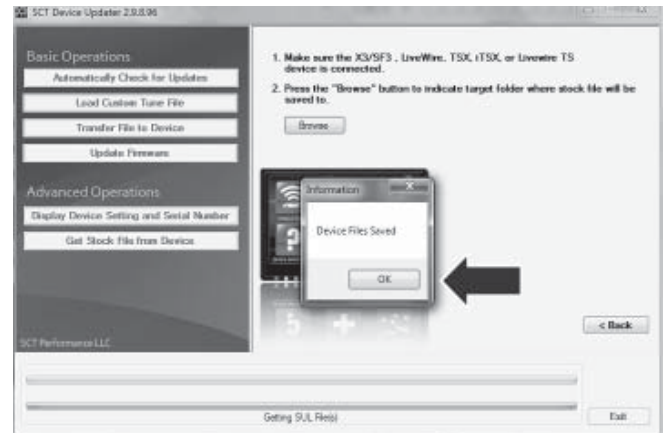
5. Turn the ignition to the **KEY OFF** position, press "Continue" and wait for the vehicle to power down.



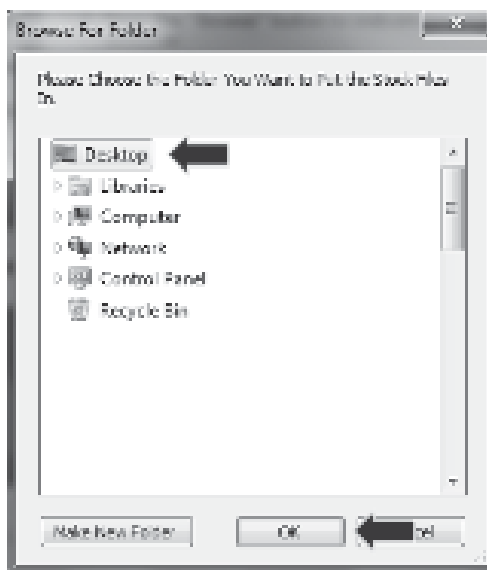
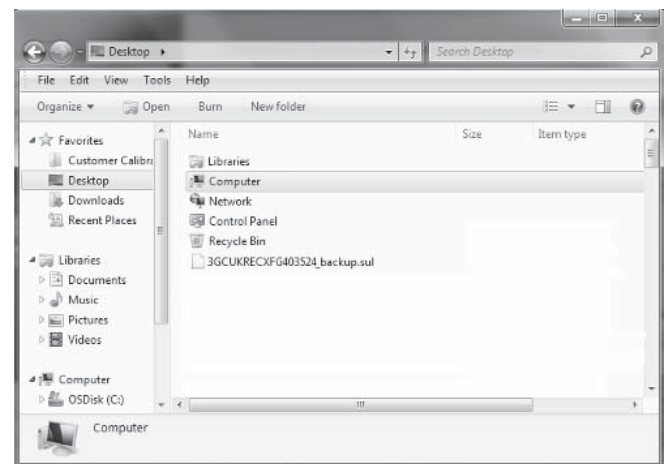
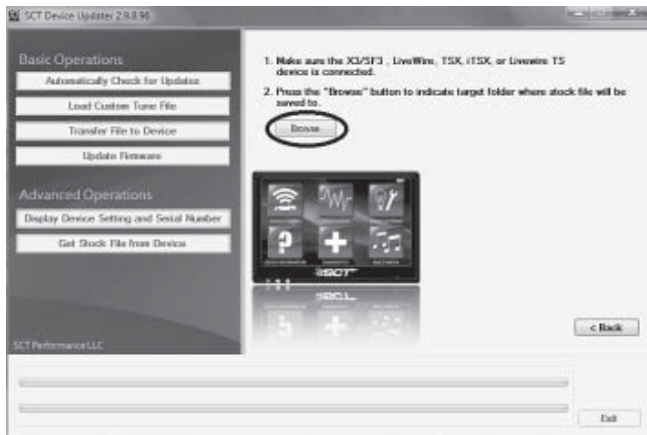
7. You may now disconnect the programmer from the vehicle, re-connect it to your Windows PC and open the same update software used in step 2 of "Updating SCT Device".
8. Select the "Get stock file from device".



9. Select “Browse” and save the stock file to your desktop.



10. Add the text “backup” to the file name that contains the VIN number and e-mail a copy of the file to “tune@slponline.com”. In the e-mail subject line write: Calibration Request for Kit # XXXXXX (Enter Kit P/N)

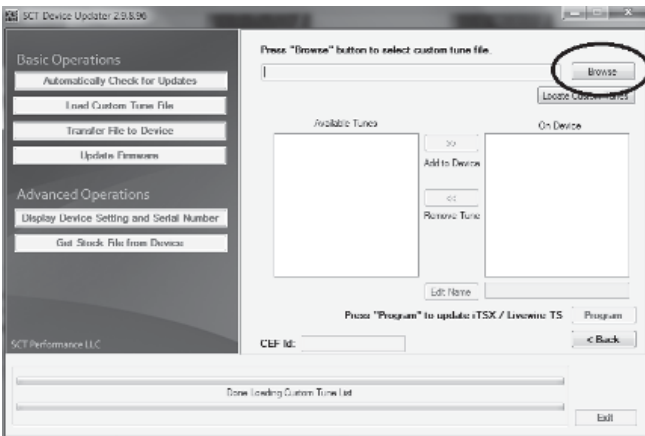


11. SLP will reply to your e-mail within one business day (Monday to Friday, 8 AM to 5 PM EST) with the calibration file for your vehicle.
12. **FAILURE TO FOLLOW THE ABOVE STEPS MAY DELAY THE INSTALLATION OF THIS KIT. SLP NEEDS THIS DATA IN ORDER TO PROVIDE YOU WITH THE LATEST CALIBRATION FILES AVAILABLE FOR YOUR VEHICLE. IF YOU HAVE A NEW MODEL YEAR VEHICLE THAT IS NOT YET AVAILABLE IN OUR DATABASE, THE TURN AROUND TIME FOR THE CALIBRATION MAY EXCEED 1 BUSINESS DAY. IF THE CALIBRATION IS NOT YET SUPPORTED, SLP WILL NOTIFY YOU OF THIS DELAY AS TO NOT CAUSE YOUR VEHICLE FROM BEING IMMOBILIZED DURING THIS TIME.**
13. Save a copy of the file attached to the e-mail sent back from SLP to the desktop of your PC. This is your new calibration file.

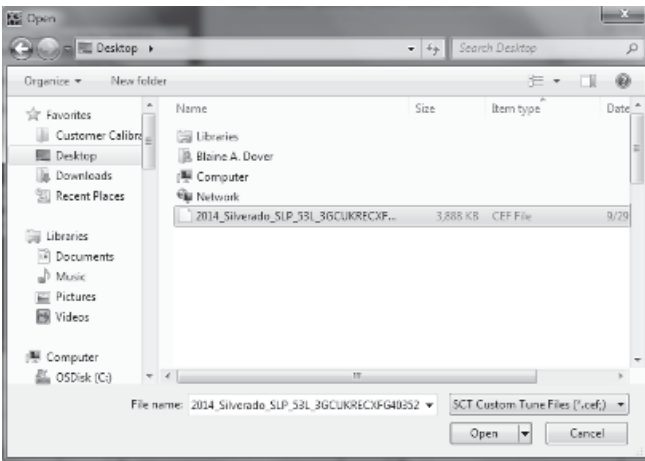
14. Plug the SCT device into your PC.
15. Open the SCT updater software and select “Load Custom Tune File”.



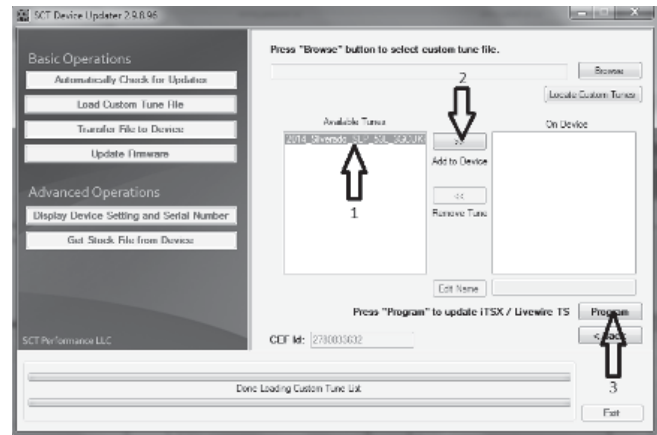
16. Then select “Locate Custom Tune”.



17. Locate and open the file that was attached in the e-mail sent back from SLP on the desktop of your PC.



18. Select the tune from the left column (#1), next select the right arrows (#2) then “Program” (#3).



19. Your device is now ready to reprogram the vehicle.

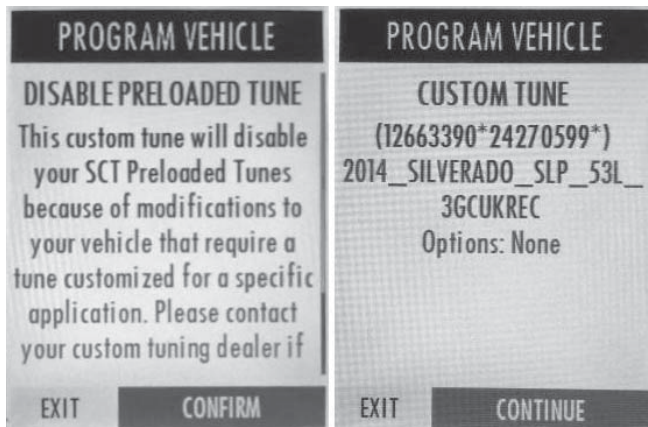
## PROGRAMMING THE VEHICLE

1. Plug the SCT programmer (7416-INST) into the OBD port of the vehicle that is to be calibrated.
2. Select “Program Vehicle” from the menu screen. Select the SLP custom tune.

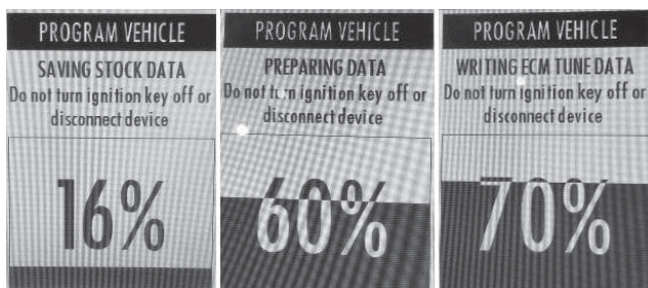


3. Select “Confirm”, then “Continue”.

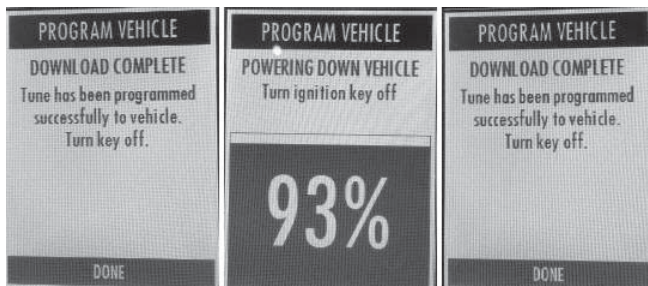




4. Wait for the programmer to finish the flashing process.



5. When prompted, turn the ignition key to the “Off” position and unplug the SCT programmer from the OBD port.



6. Select “Done”. Programming is now complete.