

2016+ Camaro V8 or V6/I4 Exhaust Kit

Installation Instructions

P/N: 620079 (99-135)

P/N: 620078 (99-136)



SLP
STREET LEGAL PERFORMANCE

39555 Schoolcraft Rd, Plymouth MI, 48170 | [855.SLP.PERF](tel:855.SLP.PERF)

2016+ Camaro V8 or V6/I4 Exhaust Kit

Installation Instructions

P/N: 620079 (99-135), 620078 (99-136)



Application: 2016+ Chevrolet Camaro 620079 (99-135) V8, 620078 (99-136) V6/I4

*Not recommended for use on quad tip active exhaust systems. System will fit but the tips will not be centered in rear valance.

Important Note:

Before installing your SLP exhaust, please read through the entire installation procedure and check to make sure all items are present. Contact SLP Customer Service at 1-855-SLP-PERF, 9:00 AM to 5:00 PM EST weekdays, for any questions regarding fit or instructions that are unclear to you.

TABLE OF CONTENTS

Packaging List for 6.2L V8 Exhaust Kit 620079 (99-135).....	3
Packaging List for 3.6L V6/2.0L I4 Exhaust Kit 620078 (99-136).....	3
Equipment and Supplies Required.....	3
Limit of Liability Statement.....	4
Safety Precautions	4
Work Safely!	4
Original Exhaust System Removal	5
SLP Exhaust System Installation.....	6

2016+ Camaro V8 or V6/I4 Exhaust Kit



NOTE: All illustrations in this manual are representative of the 2016+ SLP axle back exhaust systems.

PACKAGING LIST FOR 6.2L V8 EXHAUST KIT 620079 (99-135)

Description	Part Number	Quantity
Pipe Assembly - LH	5-61	1
Pipe Assembly - RH	5-62	1
Exhaust Tip (SLP Etched)	310305787	2
Clamp Kit	2116-V8EXHWK	1
Clamp – 3" Dia	10-0439	2
Clamp – 2-3/4" Dia	10271	2

PACKAGING LIST FOR 3.6L V6/2.0L I4 EXHAUST KIT 620078 (99-136)

Description	Part Number	Quantity
Pipe Assembly - LH	5-64	1
Pipe Assembly - RH	5-65	1
Exhaust Tip (SLP Etched)	310305787	2
Clamp Kit	2116-V6EXHWK	1
Clamp – 3" Dia	10-0439	2
Clamp – 2-1/4" Dia	94-0052	2

EQUIPMENT AND SUPPLIES REQUIRED

- 3/8" Drive Ratchet
- 3/8" Drive Extension 3"
- 15 mm Socket
- Spray Lubricant (Soapy Water/Glass Cleaner)
- Reciprocating Saw ("Sawzall") or Equivalent Cutting Tool
- Tape Measure
- Marker Pen

If you are missing any items, please call us toll free at 1-855-757-7373.

LIMIT OF LIABILITY STATEMENT

The information contained in this publication was accurate and in effect at the time the publication was approved for printing and is subject to change without notice or liability. Street Legal Performance (SLP) reserves the right to revise the information presented herein or to discontinue the production of parts described at any time.

SAFETY PRECAUTIONS



CAREFULLY READ THE IMPORTANT SAFETY PRECAUTIONS and WARNINGS BEFORE PROCEEDING WITH THE INSTALLATION!

Appropriate disassembly, assembly methods and procedures are essential to ensure the personal safety of the individual performing the kit installation. Improper installation due to the failure to correctly follow these instructions could cause personal injury or death. Read each step of the installation manual carefully before starting the installation.

- Always wear safety glasses for eye protection.
- Place ignition switch in the OFF position.
- Always apply the parking brake when working on a vehicle.
- Block the front and rear tire surface to prevent unexpected vehicle movement.
- If working with a lift, always consult vehicle manual for correct lifting specifications.
- Operate the engine only in well-ventilated areas to avoid exposure to carbon monoxide.
- Do not smoke or use flammable items near or around the fuel system.
- Use chemicals and cleaners in well-ventilated areas.
- Batteries produce explosive gases, which can cause personal injury. Therefore, do not allow flames, sparks or flammable substances to come near the battery.
- Keep hands and any other objects away from the radiator fan blades.
- Keep yourself and your clothing away from moving parts when the engine is running.
- Do not wear loose clothing or jewelry that can get caught in rotating parts or scratch surface finishes.
- Allow the engine, cooling system, brakes and exhaust to cool before working on a vehicle.

WORK SAFELY!

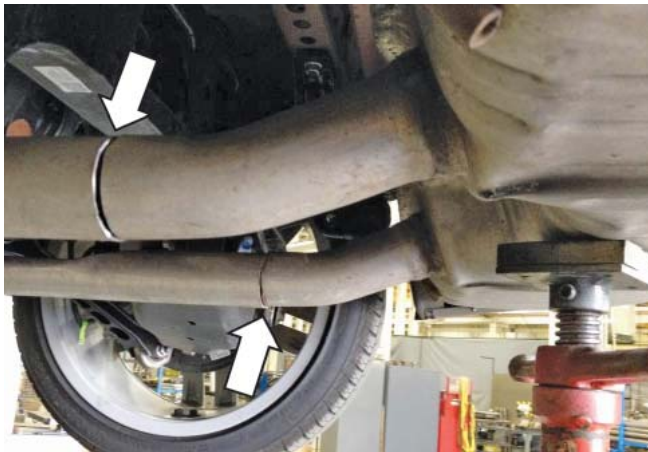
Perform this installation on a good clean level surface for maximum safety and with the engine turned off.

ORIGINAL EXHAUST SYSTEM REMOVAL

1. On both the left hand (LH) and the right hand (RH) sides, measure 7" from the muffler body and mark the exhaust pipe in front of the muffler as shown.



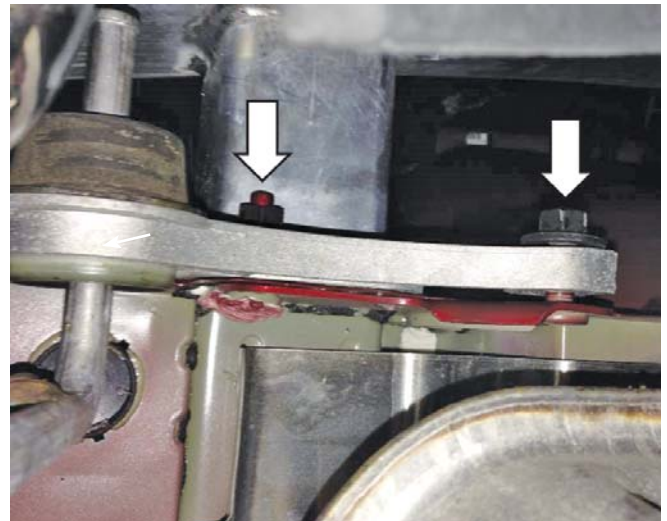
2. Cut the LH and RH exhaust pipes at the locations marked in step 1 using a suitable cutting tool.



3. While supporting the muffler, detach the rubber hanger bushings closest to the axle from the hanger brackets on each side of the muffler.



4. Unbolt the two (2) rear hangers from the frame located behind the rear bumper, and remove the hangers from the vehicle.



5. Carefully remove the muffler assembly from the vehicle. If removing the quad tip active exhaust, disconnect the wiring, tape up the connectors and tie out of the way. This concludes the removal process for the OEM exhaust.

! WARNING

Use extreme caution during installation. Torque all fasteners according to manufacturer's torque values and tightening sequence. **DO NOT** use air impact tools to tighten fasteners on SLP exhaust systems. Use of such tools may result in bent flanges or gasket contact areas leading to exhaust leaks.

SLP EXHAUST SYSTEM INSTALLATION

1. Remove the rear hanger brackets from the original muffler and install them on the hangers of the new pipes. Be sure to install them on the correct side, RH and LH as shown. Use spray lubricant, if needed.



2. Deburr the freshly cut exhaust pipes on the vehicle. Measure 2-1/2" from the end of both pipes and mark the installation depth for the new pipes.



3. Slide one (1) smaller band clamp (P/N 10271 V8) or (P/N 94-0052 V6/I4) over each of the exhaust pipes under the rear axle.



4. Insert the RH pipe (P/N 5-62 V8) or (P/N 5-65 V6/I4) over the RH under axle pipe and reattach the rear hanger to the frame using the original fasteners. Repeat the same procedure for the LH pipe (P/N 5-61 V8) or (P/N 5-64 V6/I4). Torque the hanger fasteners to 20 Nm.



5. Align the front of each pipe to the installation depth, previously marked. Slide the band clamps over the joints and position as shown. Torque the band clamp 15 mm bolts to 30 Nm.



6. Slide one (1) of the 3" band clamps (P/N 10-0439) over the end of the LH and one (1) over the RH pipes.



7. Carefully install one (1) tip (P/N 310305787) over each of the ends of the pipes. Slide the band clamps over the joints and align tips for the desired fit with the rear valance. Torque band clamp 15 mm bolts to 30 Nm. If adjustments are necessary, loosen the band clamp bolts, make your adjustments and re-torque the clamp bolts.



Before starting the vehicle, make sure to check all wires, hoses, brake lines, body parts, tires, and any other components for safe clearance from the exhaust system.

Start the vehicle and check for any exhaust leaks. If any leaks are found, determine the cause (such as insufficient pipe engagement, loose or incorrectly positioned clamp) and repair as necessary.

Congratulations!!! You have completed the installation of the SLP Exhaust Kit. It is recommended that you save all parts removed from the vehicle during the installation of this kit.