



1501 Industrial Way North, Toms River, NJ 08755
 Phone: (732) 349-2109 • Fax: (732) 244-0867

PART
#D31004/D31005/#D31007/#D31008

Cat-Back, 2005-07 SRT-8 Hemi Charger/Magnum/300C
(Loudmouth/Loudmouth II)

PACKING LIST

Before installation, use this check list to make sure all necessary parts have been included.

ITEM	QTY	CHECK	PART NUMBER	DESCRIPTION
1.	1	<input type="checkbox"/>	310570103	X-Pipe, SRT-8, 2004-2007, 2.75" Inlet
	or 1	<input type="checkbox"/>	310570106	X-Pipe, SRT-8, 2004-2007, 3.0" Inlet
2.	1	<input type="checkbox"/>	310570104	Tailpipe, D-Side, SRT-8
3.	1	<input type="checkbox"/>	310570105	Tailpipe, P-Side, SRT-8
4.	2	<input type="checkbox"/>	10271	Clamps, Torca, 2.75" when using 2.75" Inlet X Pipe
	or	<input type="checkbox"/>	or	or
	0	<input type="checkbox"/>	0	NO 2.75" CLAMP when using FULL 3" X-Pipe
5.	6	<input type="checkbox"/>	308940020	Clamps, Torca, 3" (2.75" Inlet X-Pipe)
	or	<input type="checkbox"/>	or	Or
	8	<input type="checkbox"/>	308940020	Clamps, Torca, 3" (3' Full X-Pipe)
6.	2	<input type="checkbox"/>	310305787	Tip, 4.0" Polished, Slash Cut Dual Wall
7.	2	<input type="checkbox"/>	31067	Muffler, Bullet, SRT-8
	or	<input type="checkbox"/>	or	Or
	2	<input type="checkbox"/>	31066	Resonator, Bullet, SRT-8
8.	2	<input type="checkbox"/>	307746766	Spacer, Exhaust Brace, SRT8 Charger
9.		<input type="checkbox"/>	*****	Instructions

WARNING: SLP Recommends allowing the vehicle to cool (not running) for five hours before beginning installation.

INSTALLATION INSTRUCTIONS - #D31004/D31005/D31007/D31008

- 1 Raise and fully support the vehicle (a vehicle lift is recommended).
- 2 Loosen the two band clamps on the stock cat-back as shown below.



PHOTO 1

- 3 Next remove the two nuts with springs attached on the driver's side stock muffler assembly. See photo 2 below.

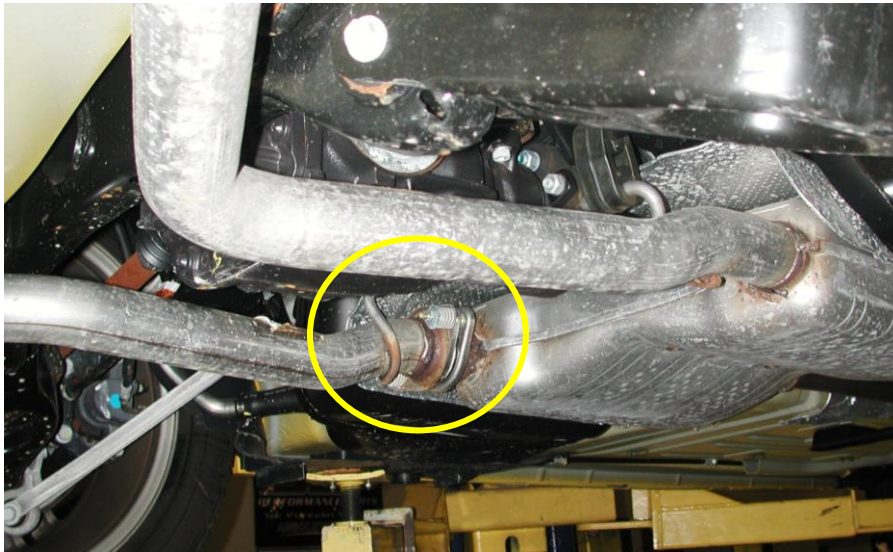


PHOTO 2

- 4 Carefully remove the rear driver's side muffler assembly from the vehicle by sliding the rubber isolators off the hangers attached to the assembly.
- 5 Next, with the aid of a helper remove the remaining stock exhaust system as one piece. Removing all remaining rubber isolators from the stock exhaust system and carefully sliding the exhaust off of the stock CAT down-pipes.

- 6 Next remove the black center cross member and install the two aluminum spacers between the bottom body of the vehicle and the top of the cross brace to allow more clearance for the new X-Pipe. See photo 3 below.



PHOTO 3

- 7 Next install two 3" Torca Clamps or 2.75" Torca Clamps onto the inlet of the new SLP X-Pipe. Depending on which X-Pipe you have determines if you are using the 3" Torca Clamps or 2.75" Torca Clamps.
- 8 Slide the SLP X-pipe onto the outlets of the stock CAT down-pipes or SLP POST CAT Downpipes. (Depending on which system in on your vehicle.) See photo 4 below.

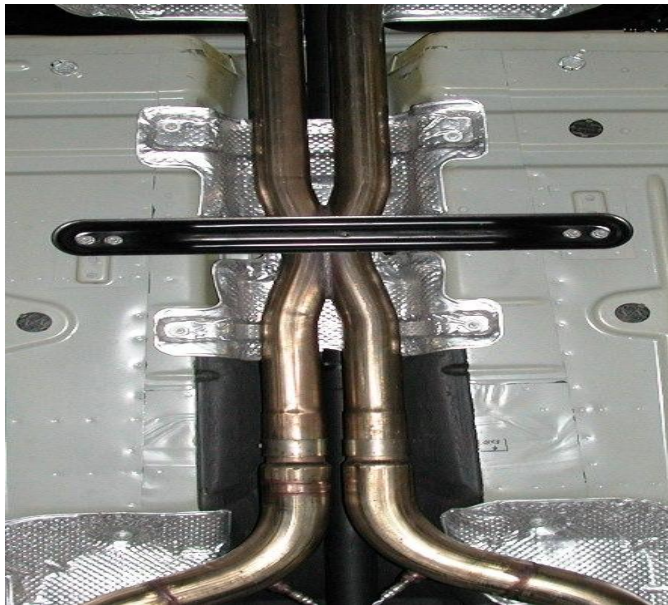


PHOTO 4

- 9 Next install the new SLP Loudmouth Resonators or Bullet Mufflers onto the outlet of the SLP X-Pipe using two of the supplies 3" torca clamps.
- 10 Next install the SLP driver's side and passenger's side tailpipe onto the outlet of the resonators/mufflers installed on step 9 above using the supplied 3" Torca Clamps. Hang the pipes using the stock rubber isolators as shown in photos 5,6 and 7 on the following page.

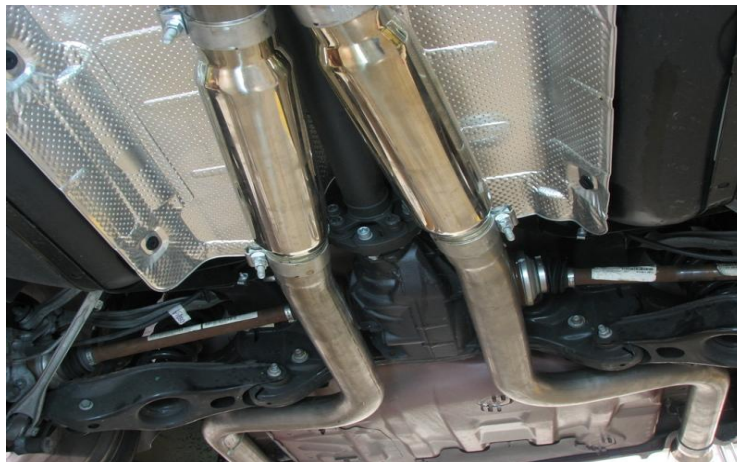


PHOTO 5

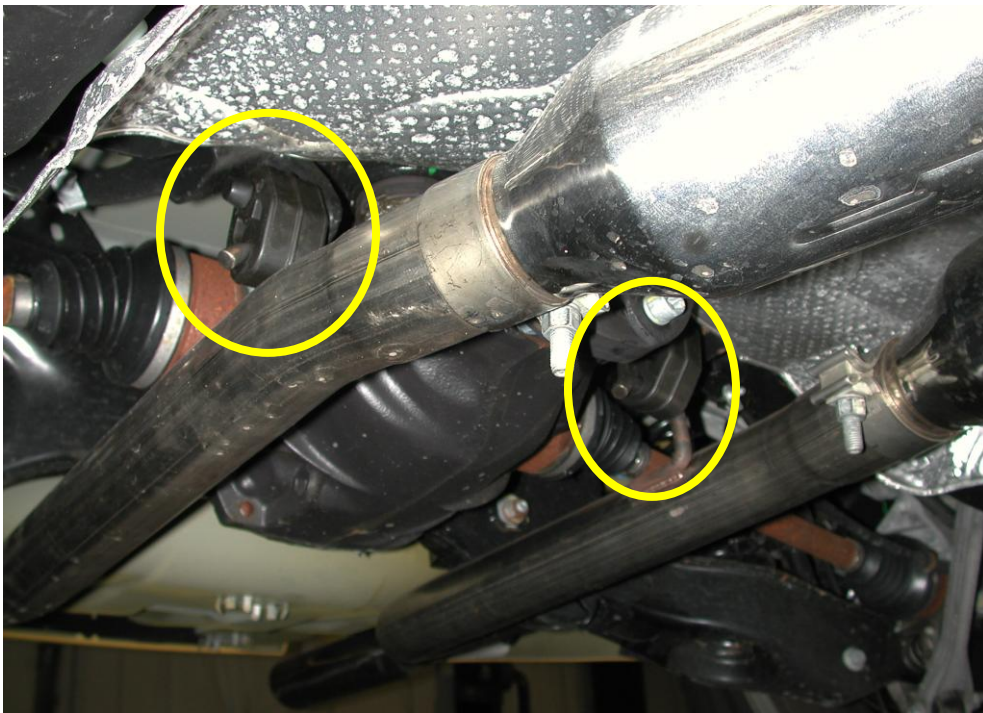


PHOTO 6



PHOTO 7

- 11 Next, install a 3" Tora clamp onto the outlet of each tail pipe and install each tip.
- 12 Adjust the system from front to rear making sure all exhaust components are clear and free of contact to any wiring or body parts. See photos on next page of completed installation.



- 13 The installation is now complete! ENJOY!