

Exhaust System, Rear Section Exhaust, 2005-2009 Mustang V6,
PowerFlo w/3.5" Tip

PACKING LIST

Before installation, use this checklist to make sure all necessary parts have been included.

ITEM	QTY	CHECK	PART NUMBER	DESCRIPTION
1.	1	<input type="checkbox"/>	310305801	Tip, PowerFlo,, Round, Assy, V6, Mustang
2.	1	<input type="checkbox"/>	310034785	Muffler Assembly, P-Side, PowerFlo
3.	1	<input type="checkbox"/>	315032785	Tube, Inlet, Axle Back Pass Side
4.	3	<input type="checkbox"/>	308144380	Clamps, Torca, 2.5"
5.	1	<input type="checkbox"/>	*****	Instructions

WARNING: SLP Recommends wearing safety glasses for the complete installation.

WARNING: SLP Recommends allowing the vehicle to cool (not running) for five hours before beginning installation.

INSTALLATION INSTRUCTIONS - # M31021

1. Remove your stock "Axle-Back" system by removing the bolts that hold the rubber isolator brackets to the chassis and then unbolting the Torca clamp on the over axle pipe.

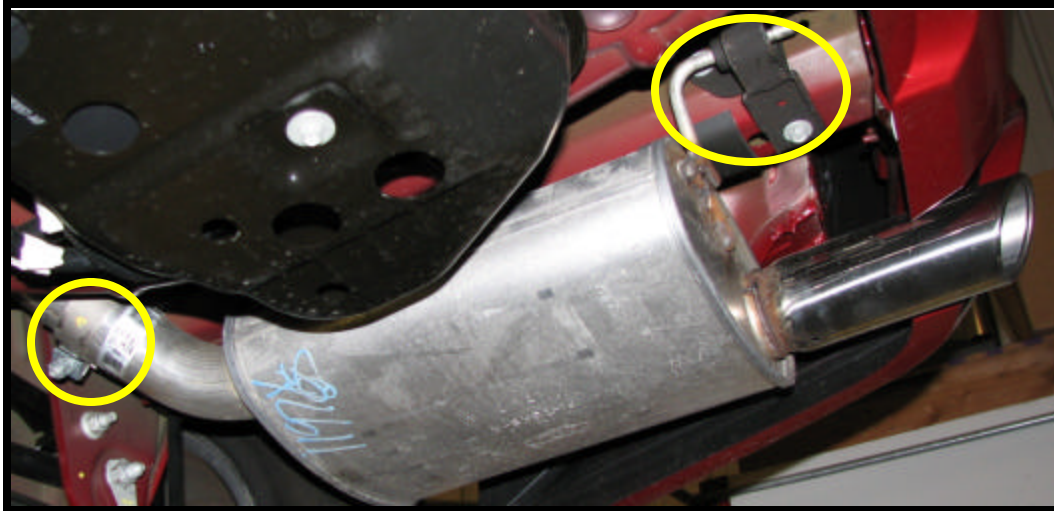


Photo : Passengers Side Factory Axle Back Muffler

2. Slide the over-axle pipe to muffler pipe on the factory over axle-pipe with a supplied Torca clamp. Insert the SLP pipe hanger into the factory rubber isolator and bolt the isolator to the chassis loosely. Next, install the muffler onto the over-axle connecting pipe with a supplied Torca clamp. Insert the SLP muffler hanger into the factory rear rubber isolator and bolt the isolator to the chassis loosely. Next install the tip onto the muffler using a supplied Torca clamp. Finally, carefully adjust the system and tighten all clamps and isolator bracket bolts firmly, see Photo 2 below.

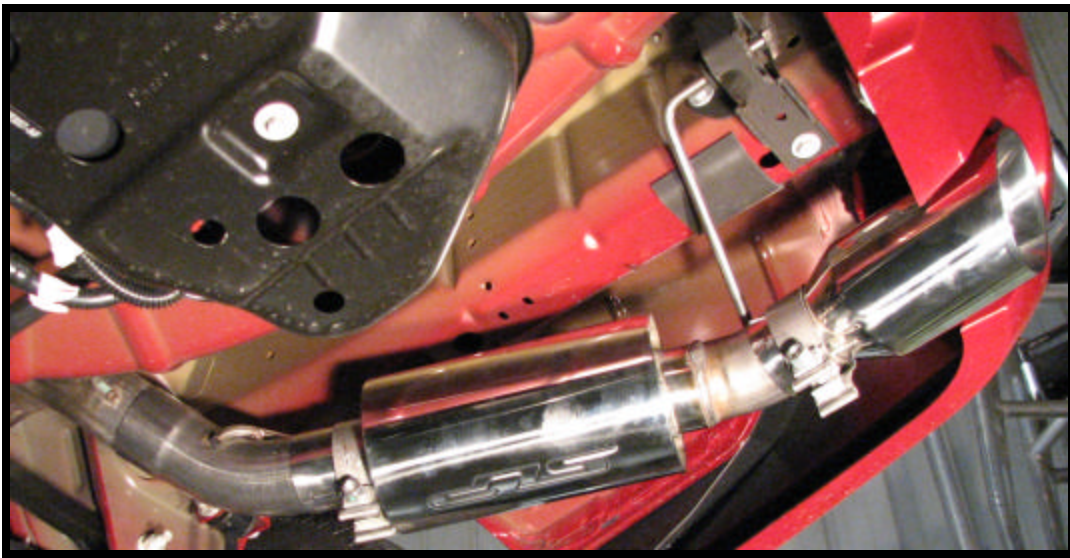


Photo : SLP Powerflo Axle Back Installed

3. Make sure that you install the hanger brackets back onto the vehicle the same way they came off. They can be installed incorrectly which results in poor and incorrect tip to rear valance alignment. Please see the photos below for clarification.

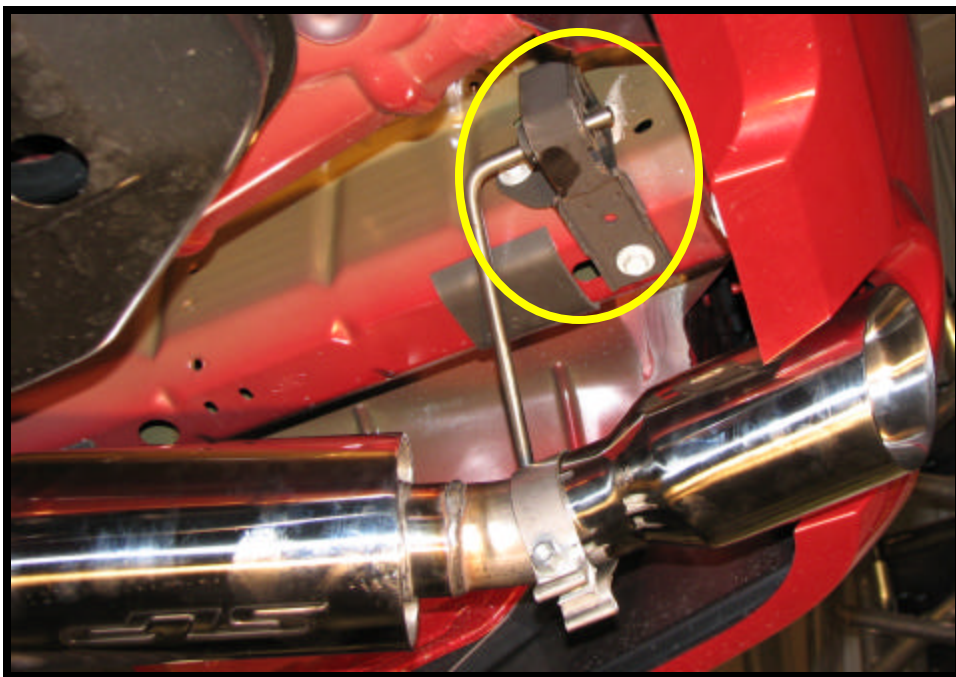


Photo : Passengers Side Rear Bracket

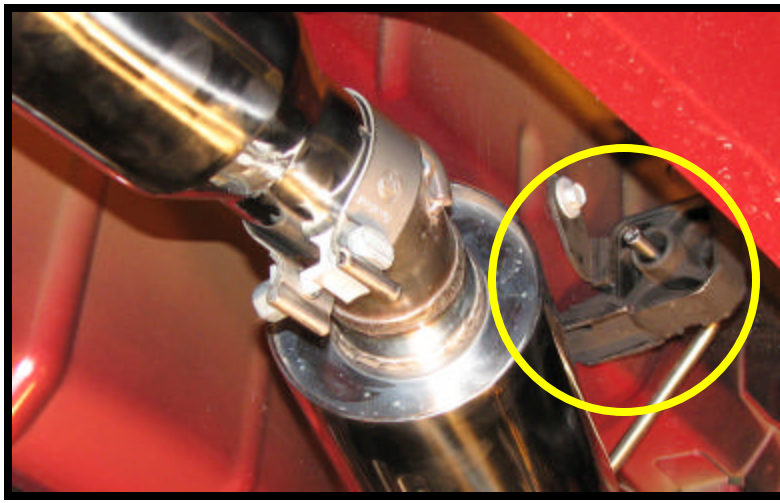


Photo : Passengers Side Front Isolator Bracket

4. The installation is now complete. Enjoy!