



PART #31675V

## Valance, Trailblazer SS, 2006-2009

### PACKING LIST

*Before installation, use this check list to make sure all necessary parts have been included.*

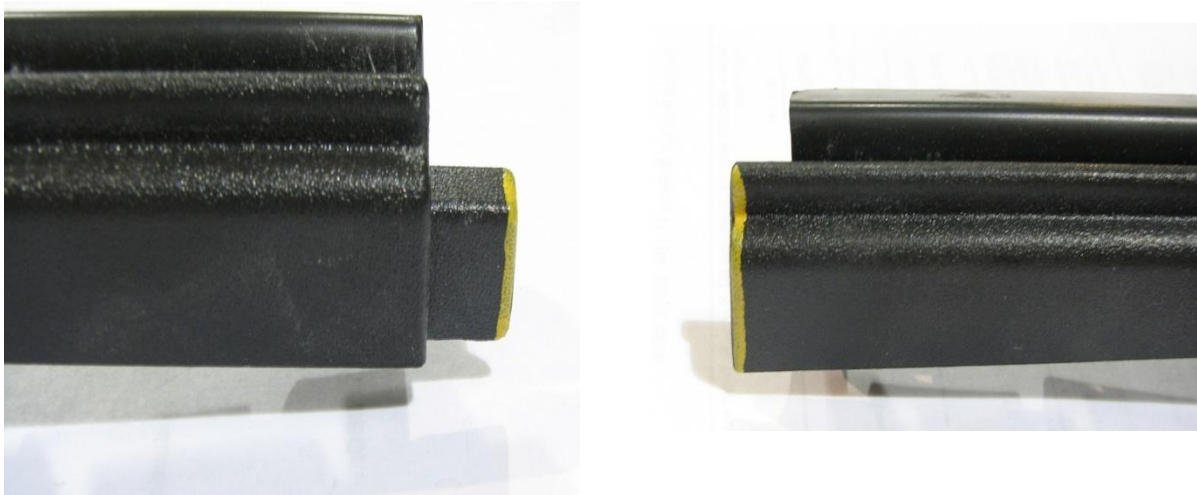
ITEM	QTY	CHECK	PART NUMBER	DESCRIPTION
1.	1	<input type="checkbox"/>	010854101	Valance, Rear, Trailblazer SS
2.	1	<input type="checkbox"/>	50229K	Tape 0.090 Thick 50" L x 1/2" W
3.	2	<input type="checkbox"/>	10886A	Tape 0.060 Thick, 3' L x 1/2" W
4.	2	<input type="checkbox"/>	12000011	3M Adhesion Promoter, Single Packet
6.	1	<input type="checkbox"/>	2506-17F957IM	Instructions

**WARNING:** SLP Recommends allowing the vehicle to cool (not running) for five hours before beginning installation.

**NOTE: THE FRONT AND BACK OF THE SLP VALANCE MUST BE PREPED PRIMED AND PAINTED BEFORE FINAL INSTALLATION ON YOUR TBSS. IT IS SLP's RECOMMENDATION THAT THE VALANCE BE FIT TO THE VEHICLE PRIOR TO PREP PRIME AND PAINT AS ANY MINOR ADJUSTMENTS CAN THEN BE MADE TO THE TRUCK OR THE VALANCE FOR THE BEST FIT. SLP RECOMMENDS THAT A PROFESSIONAL BODY SHOP FINISH THE VALANCE INSTALLATION.**

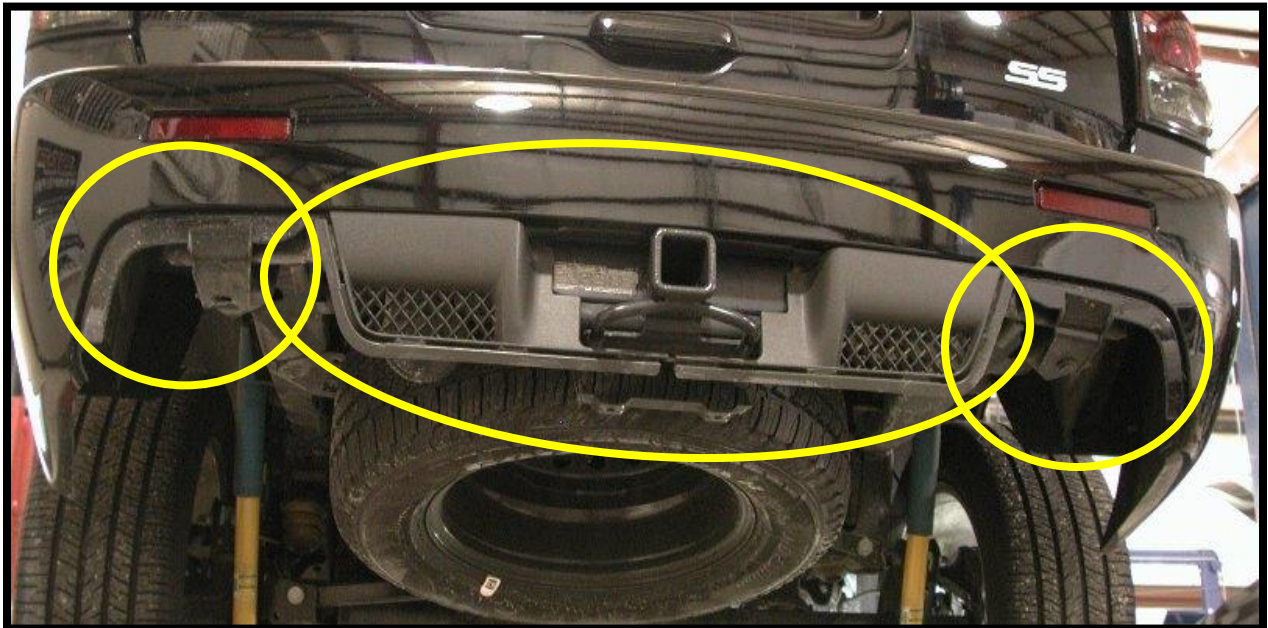
### INSTALLATION INSTRUCTIONS - #31675V

- 1 Raise and fully support the vehicle (a vehicle lift is recommended).
- 2 Using a small flat blade screw driver carefully disengage the locking tabs from the trailer hitch valance and remove the stock rear valance from the vehicle.
- 3 Next check fitment of the new valance BEFORE PAINT by holding it in place with the aid of a helper on each side. Make any adjustments to the vehicle or valance as necessary. One adjustment that could be made **if needed** is to shorten each tab on the honeycomb rear valance sections by 1/16" see Figure 1 below. This can help and keep you from having to sand any inside edges of the valance if needed. **Check fitment first before any modifications.**



**Figure 1: Tab shortening: If needed, the yellow line can be ground off.**

- 4 Paint the new rear SLP Valance.
- 5 Next thoroughly clean the back of the new PAINTED SLP valance with wax and grease remover and let dry.
- 6 Next thoroughly clean the three main surfaces where you will be installing the tape onto your TBSS with soap and water first then wax and grease remover twice as this area can be VERY dirty and the tape needs to be adhered to a CLEAN prepped surface. See Figure 2.



**Figure 2: Sections to be Cleaned**

- 7 After all surfaces have dried, use the supplied adhesion promoter on all surfaces to be taped. The adhesion promoter must be used in temperatures 60-80 Degrees F. The TBSS bumper and valance must also be 60-80 Degrees F. If the truck was outside, take it inside to the garage and let it warm up if necessary. This will create a surface optimal for tape adhesion.

- 8 Next, using the supplied ½” wide adhesive tape line the edges of the trailer hitch valance. See Figure 3 below.



**Figure 3: Adhesive Tape on Trailer Hitch Valance**

- 9 Next with the supplied ½” wide tape, line the two outside edges of the rear bumper. See Figure 4.



**Figure 4: Adhesive Tape on Rear of Vehicle**

- 10 Next remove the outer backing of the tape and carefully install the new valance. It is easiest to remove the backing off the ½” wide pieces first, stick on the valance, and then peel off the backing on the ½” wide tape. Make sure that the two center hitch valance pieces are pushed together fully in the center as they can slide on each other.
- 11 Once the valance is in position, with high pressure secure the back of the taped sections with one hand and push from the outside to secure the valance to the tape. Move a couple inches at a time holding pressure for 10 seconds at each spot.
- 12 The installation of the rear valance is complete. Please see Figure 5 below.



**Figure 5: Valance Install Complete**